



Pine Manor College

400 Heath Street, Chestnut Hill, MA 02467

EDUCATING WITH PURPOSE



AN EVOLUTION OF ONE MISSION



Please join us for An All-College Reunion Weekend May 13-15, 2022



A JOURNEY OF EDUCATING WITH PURPOSE



PINE MANOR College Bulletin

THE MAGAZINE FOR ALUMS & FRIENDS OF THE COLLEGE

THE LAST ISSUE - A SPECIAL 2022 COMMEMORATIVE EDITION

MISSION IN MOTION

Pine Manor College prides itself for the uniquely individualized, transformative nature of its academic experience concentrating all efforts to educate and mentor students by meeting them where they are. Thanks to the College's small size, we are able to connect with each student, become intimately familiar with the story on an individual basis and tailor an academic and student life experience to best fit each student's life circumstances and personal goals. As a community of educators, we hold the strong belief that to support individual growth, there is rarely a time when a "one size fits all" solution works. For over a century, PMC provided students with the knowledge and skills they need to meet the challenges of career, community, and citizenship through empowering experiences both in and out of the classroom. To that end, as we come to conclude this chapter of Pine Manor College as a degree granting institution, it is fitting to recall the documented path of our mission's evolution.

2017 – 2022 MISSION STATEMENT

THE MISSION OF PINE MANOR COLLEGE IS TO MAKE CERTAIN THAT ALL GRADUATES ARE PREPARED TO TAKE MEANINGFUL STEPS IN THEIR LIVES: ENGAGING IN NEW JOBS AND CAREERS, CONTINUING TO LEARN, AND POSITIVELY CONTRIBUTING TO THEIR COMMUNITIES. STUDENTS, INCLUDING THOSE WHO ARE THE FIRST IN THEIR FAMILIES TO ATTEND COLLEGE, WHO ARE LOOKING FOR A PURPOSEFUL EDUCATION IN A PERSONALIZED AND INCLUSIVE LEARNING COMMUNITY WILL FIND A HOME AT PINE MANOR COLLEGE.

2012 – 2017 MISSION STATEMENT

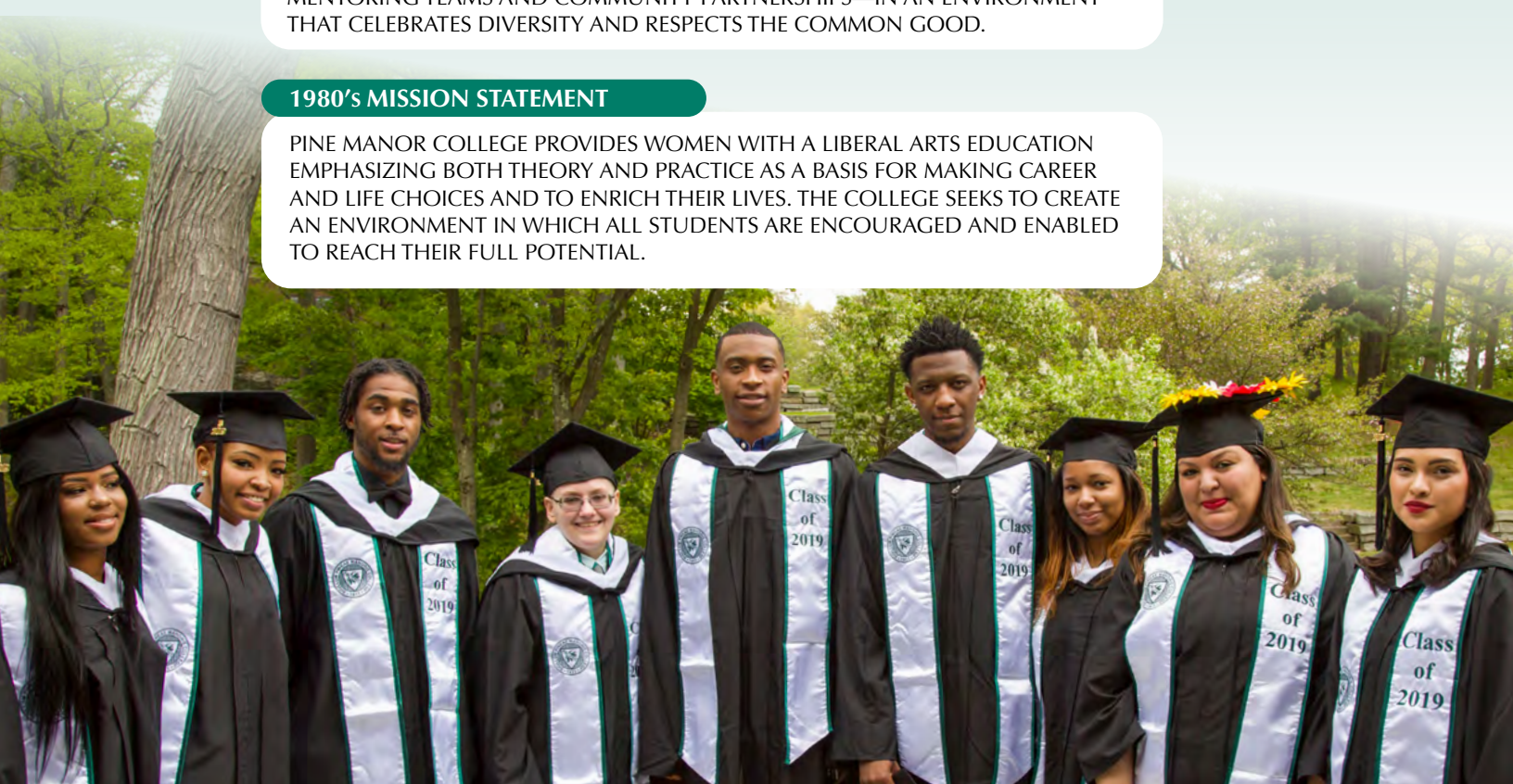
PINE MANOR COLLEGE EDUCATES AND EMPOWERS A DIVERSE STUDENT BODY TO BECOME ACCOMPLISHED, REFLECTIVE, AND CONFIDENT LEADERS – ONE STUDENT AT A TIME.

1997 – 2012 MISSION STATEMENT

PINE MANOR COLLEGE IS A FOUR-YEAR LIBERAL ARTS COLLEGE DEDICATED TO PREPARING WOMEN FOR ROLES OF INCLUSIVE LEADERSHIP AND SOCIAL RESPONSIBILITY IN THEIR WORKPLACES, FAMILIES AND COMMUNITIES. WE PURSUE THIS GOAL THROUGH: INTEGRATION OF AN OUTCOMES-BASED CURRICULUM AND CO-CURRICULUM DEMONSTRATED BY PORTFOLIO PRESENTATIONS; ACTIVE, COLLABORATIVE, APPLIED LIBERAL ARTS LEARNING; AND COLLEGE-WIDE MENTORING TEAMS AND COMMUNITY PARTNERSHIPS—IN AN ENVIRONMENT THAT CELEBRATES DIVERSITY AND RESPECTS THE COMMON GOOD.

1980's MISSION STATEMENT

PINE MANOR COLLEGE PROVIDES WOMEN WITH A LIBERAL ARTS EDUCATION EMPHASIZING BOTH THEORY AND PRACTICE AS A BASIS FOR MAKING CAREER AND LIFE CHOICES AND TO ENRICH THEIR LIVES. THE COLLEGE SEEKS TO CREATE AN ENVIRONMENT IN WHICH ALL STUDENTS ARE ENCOURAGED AND ENABLED TO REACH THEIR FULL POTENTIAL.



EDUCATING WITH PURPOSE A NOTE FROM PRESIDENT O'REILLY

Dear alums and friends of Pine Manor College,

At Pine Manor College, the belief in our individual and collective ability to transform has always been a part of our DNA. It was with that belief and passion that Helen Temple Cook decided to start Pine Manor Junior College — educating women at a time when women had very limited access to education. That same belief led Carlos Ferry to realize a unique opportunity to relocate PMJC to our beautiful Chestnut Hill campus. Driven and forward-thinking, Rosemary Ashby believed that Pine Manor College could and should expand and grow, so she built out the campus, transformed PMJC into a four-year college, and added a graduate program. And Gloria Nemerowicz's inspirational quest for social justice reshaped the PMC mission to serve the under-served. This final issue of the PMC Bulletin pays homage to that history, highlighting amazing transformations and, of course, celebrating our alums and the entire Gator community.

I am gratified that the Pine Manor College mission will continue to live on through the Pine Manor Institute for Student Success at Boston College. Thanks to our 2020 agreement with Boston College, the institute is funded by a significant endowment that, at this time, stands at \$100 million. Additionally, many Boston College programs that are focused on student success will operate under the Pine Manor Institute, and new, exciting programs directed to support first-generation, low-income students are being developed. The first such program to launch this summer is a college prep program that will be hosted on the BC campus. Beyond the institute's work, Boston College has announced the launching of a two-year residential college called Messina College, which will offer associate degree programs beginning in the 2024-2025 academic year, and will be located on our beloved Pine Manor College campus.

The newly formed programs at Boston College bring together mission, commitment, talent, and resources in a brilliant new way, and I believe that these programs will succeed in magnifying and advancing the mission and legacy of Pine Manor College for years to come.

On a personal note, it has been a great honor and privilege to serve as Pine Manor College's President these past six years. When I was appointed in the Spring of 2016, I knew that I was about to join an exceptional organization dedicated to social justice. What I did not realize is how wonderfully rewarding it would be to team up with so many in our community - our students, our faculty and staff, our alums, our donors, and our supporters - all working together to make change happen, all believing deeply in our mission and each other. I want to thank you all for giving me this opportunity to help shape a vision and a mission close to my heart. I will be forever grateful for that, and I am hopeful that we will all find ways to continue this important work in the future.

I look forward to seeing you at our all-campus reunion and at our Commencement in May, which will no doubt be a great celebration of the Pine Manor College mission and tradition as well as a celebration of our ever-lasting legacy.

Very truly yours,

Thomas M. O'Reilly, President

TABLE OF CONTENTS

-  AN EVOLUTION OF ONE MISSION | 4
-  THE COMPOUND EFFECT | 11
-  HONORARY DEGREE RECIPIENTS | 24
-  50 YEARS OF ART AT THE HESS | 27
-  GIVING WITH PURPOSE | 29
-  ART ON CAMPUS | 33
-  REMEMBERED | 35
-  TREES ON CAMPUS | 41
-  SPRING EXHIBIT | 42
-  COMING HOME | 43

AN EVOLUTION OF ONE MISSION



A JOURNEY OF EDUCATING WITH PURPOSE

In June of 2020, through an agreement with Boston College, the latest chapter in a long and enduring legacy of Pine Manor College was created, and the Pine Manor Institute for Student Success was established. Years of intentional work dedicated to social justice have paved the way to this historic moment in Pine Manor College's history. The story of the College over the past 110 years is a story of resilience and dedication to empowering those marginalized by our society. That inherent institutional DNA was and still is guiding the College's actions as we look forward to the forming of the Pine Manor Institute for Student Success at Boston College.

Many chapters shaped the legacy of Pine Manor College and laid the foundation for this latest chapter. Pine Manor College was originally established as a post-secondary division of Dana Hall School in Wellesley, MA in 1911 by the late Helen Temple Cooke, a pioneer dedicated to preparing women for successful lives. Over a century later, the College changed and evolved to offer Associate and Bachelor degrees, as well as a Master of Fine Arts degree. Its evolution has been one of planned growth championing the expansion of opportunities for the underserved.

In 1930, the College received a charter as an independent junior college and in 1959 gained the right to confer the degrees of Associate in Arts and Associate in Science. Pine Manor Junior College became a separate corporation in 1962 and in 1965 moved from the Wellesley campus to its beautiful 50-acre campus in Chestnut Hill, five miles west of Boston.

In 1977, the Massachusetts Board of Higher Education authorized the College to expand its mission, confer the Bachelor of Arts degree in the humanities and social sciences, and change its name to Pine Manor College. In 1994, the charter was further expanded to include the Bachelor of Arts in Biology. The College grew to offer nine majors at the baccalaureate level, each of which is structured to include a core as well as several optional concentrations. Minors in thirty fields made it possible for students to design their programs to meet their specific career goals. Leading the way in addressing the needs of its students, Pine Manor College established an internship program, that was fully implemented in 1975. One of the first of its kind in the country, the internship program combined academic components, faculty sponsorship, and concurrent seminars with both exploratory internship experiences and the senior internship in the major field.

Through the leadership of Pine Manor College's longest-serving presidents like Gloria Nemerowicz (1996-2011), Rosemary Ashby (1976-1996), Frederick Carlos Ferry, Jr. (1956-1974), and Marie Warren Potter (1930-1952), Pine Manor College has continuously evolved its traditions while reinterpreting its goals and revising its programs to meet the changing needs of its students. Most recently, the work done by PMC president Thomas M. O'Reilly and his leadership team led the way to the partnership with Boston College. Upon his appointment in 2016, President O'Reilly set out to develop and articulate a Strategic Plan which focused on an unambiguous, outcome-based mission of growing the College graduation rate. The strategic plan and aspirational mindset of what Pine Manor College could become required a full commitment from the Board and the College community and led to measurable transformation.

STRATEGIC PLANNING IMPLEMENTATION

Upon the Board of Trustees' approval of the 2017-2022 Strategic Plan, a cross-departmental team met to develop how the College could best implement the plan. As a school that serves over 80% first-generation college students, students of color, and students who qualify for Pell grants, it was important to revise the College's programming, as well as services and policies to better address the needs of all students.

A special committee was formed including people from across campus departments and students. The committee set out to accomplish three goals: first, to collect and analyze college and national data on the root causes of falling enrollment and attrition; second, to develop a strategic resolution; and third, to implement the resolution through to success. The result was the creation of the Pine Manor College's Initiative for Student Success. Building on the College's past successes with helping students academically, socially, and financially, the program centered on diversity, equity, and cultural competency to drive student achievements. As a benchmark, all of Pine Manor College's job descriptions were revised to include the goal of growing the graduation rate. The initiative encompassed every facet of Pine Manor College's operation and led to the organizational restructuring of the relationships between academic affairs and student affairs as well as a refocus on the admissions process.

1911



Helen Temple Cooke establishes Pine Manor as a post-secondary division of Dana Hall School in Wellesley, MA



1916



Adele Lathrop becomes President



1923



First Pine Manor Alumnae Association is created



1928



Constance Warren becomes President



1930



Marie Warren Potter becomes President

Pine Manor receives a charter as an independent Junior College





1935

The first President's Cup Award is awarded



1952

Dr. Alfred Tuxbury Hill becomes President



1956

Frederick Carlos Ferry, Jr. becomes President



1959

Pine Manor gains the right to confer the degree of Associate of Arts and Associate of Science



1960

First class of Associate Degree recipients graduate

CAMPUS GROUNDS

Throughout the years Pine Manor College's beautiful campus has provided the home for student learning and living. From its beginnings at the Dana Hall school in 1911 to its relocation to The Dane Estate in Chestnut Hill in 1962 (occupancy began in 1965), the campus has been a consistent and important part of the identity of the Pine Manor College community. Prospective students and visitors often comment on the serenity of the campus, even though it is only 5 miles from Boston. Current students and alums routinely talk about how the beautiful open spaces and abundant trees and shrubs helped them escape from the noise and hectic pace of the city.

The Ferry Administration Building (or "Roughwood" as it was originally named) was built in 1891. It stands as an outstanding example of the style of residential architecture popularized by Henry Hobson Richardson, one of Boston's most notable nineteenth-century architects. The building was added to the National Register of Historic Places in 1985. It first served as the residence of William Cox and his family. The estate was comprised of the residence, two gatehouses, a stable, a barn, greenhouses, and chicken houses. The entire property was purchased in 1904 by the Dane Family. In the following years, the property expanded to 120 acres. A wing containing a music room and organ loft was added to the residence in 1910. The Ferry Administration, renamed in honor of President Frederick C. Ferry Jr. in 1974, serves today as the administrative hub of Pine Manor

College. When not being used by the administration, staff, and students of Pine Manor College, the beautiful interiors, gardens, and lawns are rented out for weddings and other celebrations.

The original buildings of The Dane Estate have been modified over the years and are used for a variety of purposes. The stable, or Coach House, was turned into the library and art gallery (later named the Hess Gallery). This building was redesigned in 1974. The library doubled in size in 1985 when the wing containing the Annenberg Library and Communications Center was built. The garage with its second-floor apartments were transformed into the Dane Science Building. The two gatehouses were altered to become the residence of the Director of Grounds and Maintenance at the Heath Street entrance and the Child Study Center along Woodland Road. The original barn on The Dane Family Estate underwent several additions and alterations over the years. Today it is the home of Pine Manor College's Grounds and Maintenance as well as Housekeeping.

Notable added construction over the years has included the Cafeteria/Refectory (1963-65; 1968); Southwest (1967); South Village (1968); Haldan Hall – originally named College Hall (1968); Pine Manor Infirmary (1969); Ellsworth Hall (1970); Abercrombie Fine Arts Wing (1974); Gymnasium (1982); and the Rosemary Ashby Student Center (1997).

The outcomes of implementing the Initiative for Student Success were significant. Within two years, the College recorded increases in completed college applications (a 68% increase), admitted students (a 59% increase), enrolled students (a 7% increase), and a graduation rate that was four times the national average for the demographic served.

ACADEMIC AND STUDENT AFFAIRS PARTNERSHIPS

One of the initiative's most notable change was the pairing of every Pine Manor College student with at least two coaches: a student success coach and an academic advisor. Student-athletes also had a third coach, their athletic coach, and all benefited from other informal coaches from across the College. This structural and robust support is sustained over each student's college career journey through graduation and is a key contributor to many of the College's recent recorded successes. Student Success Coaches received cross-disciplinary training in key areas outside of student affairs, such as financial aid and course registration, as academic advisors attended programming on student development and diversity, equity, and inclusion (DEI). The collaboration of student success coaches, academic advisors, and athletic coaches allowed Pine Manor College to take a holistic approach to student support, and include perspectives regarding academic, familial, financial, and psychosocial aspects to ensure a well-rounded view of each student and their experience. Students received mentorship and developed relationships with advisors and coaches to ensure their success from matriculation to graduation.

ADMISSIONS

To support students full circle, the Admissions team reconsidered student access in weighing the potential to succeed at Pine Manor College. Through the student success model, the student affairs team implemented a new tracking system, which included weekly meetings with the deans and student success leadership team. The new tracking system allowed the College to gather data and analyze the key reasons for each students' ability to persist. The data collected helped improve the admissions team's policies and practices. Pine Manor College went beyond a test-optional application by committing to a more holistic admissions process in line with the Initiative for Student Success. It included interviewing and assessing students' character, persistence, and aspirations. Those qualities and characteristics are the hallmark of a successful Pine Manor College student and therefore became part of the profile of the students PMC admitted.

HOLISTIC STUDENT SUPPORT

As a majority minority serving institution, the launch of the Initiative for Student Success also sought to address faculty and staff's need to gain more tools to facilitate difficult classroom conversations about race and racism. A new framework was established to support students, one that is culturally aware and with a full commitment to Diversity, Equity and Inclusion (DEI) work. Through this commitment, Pine Manor College faculty and staff received training that explored students' lived experiences and became more deeply aware of the oppressive structures and systems in which some students are operating. Pine Manor College's focus on DEI included training components in racial and social equity, restorative practices, and trauma-informed care.

1961

President Ferry purchases the Dane Estate in Chestnut Hill for \$438,000



1962

Pine Manor Junior College becomes a separate corporation



1963

Construction of the Chestnut Hill campus begins



1965

Pine Manor moves from Wellesley to Chestnut Hill, MA



1966

First class to graduate on the Chestnut Hill campus



1969

Ellsworth Hall opens



1971



The Open College (continuing education) program begins for non-traditional students

RACIAL AND SOCIAL EQUITY

Pine Manor College's work and education on racial and social equity was ongoing. Through various methods; bringing in thought-leaders and experts in the DEI field for both one-day and ongoing workshops and learning series, hosting book clubs, and engaging in anti-racist dialogues with colleagues. This important and challenging work was embraced by the PMC community and influenced many decisions and policies. The work on campus related to racial and social equity relies on a commitment to continuous learning, and the impact was both professional and personal.

The spring semester First-Year Experience course was revised to include students presenting a personal passion project during a community day event. Considering the new population of men and our growing population of International Students, Michele Ramirez, Assistant Dean of Foundational Learning and her team put a great deal of effort into utilizing the First-Year Seminar program as a vehicle to develop community among our student body. For the past several years, the topic of the first-year seminars was changed to "Living in a Multicultural World" to help students explore the impact of race, ethnicity, gender, social class, religion, sexual orientation, and gender identity. This allowed the students to interact and communicate with their classmates, engage with one another around real-world issues, and understand more deeply their social identity in relation to others. It is these relationships among the students, faculty, and staff that is distinctive to Pine Manor College.

RESTORATIVE PRACTICES

Pine Manor College transformed the Office of Community Standards into an Office of Restorative Practices; rewrote the student handbook through a restorative lens; and trained faculty, staff, and student leaders on restorative practices. The community worked to prioritize students' voices and make sure survivors felt heard and had the resources to move forward personally and academically. Through implementing restorative practices on campus and the use of circles, community members learned how to listen and empathize, share their feelings, engage in difficult dialogues, and build community.

TRAUMA-INFORMED CARE

The College's work on trauma-informed care was woven into the PMC education, its practice, and policy. The College focused on educating staff and faculty on students' lived experiences and their daily lives. Faculty recognized students' familial responsibilities outside of their academics and jobs and how past experiences resurfaced in new ways in the classroom and on campus. In addition, the College changed how it supported students' mental health. Partnering with The Brookline Center for Community Mental Health, services were provided to students year-round, including the option for year-round on-campus living. This partnership gave students access to dozens of professionals and resources and unlimited counseling sessions throughout the calendar year. To increase accessibility, visibility, and combat stereotypes associated with seeking mental health help, the counselors' offices were moved to a prime location in the Student Center.

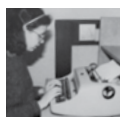
The agreement with Boston College will allow the continuation of a mission to care and advocate for student success, specifically those facing challenges caused by discrimination. Promoting social justice requires the careful study of the causes of injustice and careful implementation of a thoughtful plan to address it. Through the Pine Manor Institute for Student Success at Boston College the mission to help students who are first in their families to attend college will continue.

1974



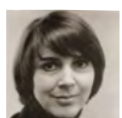
Abercrombie Fine Arts Wing and the Child Study Center Open

1975



Pine Manor College's internship program is fully implemented

1976



Dr. Rosemary Ashby becomes President

1977



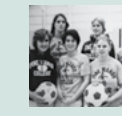
Massachusetts Board of Education authorizes Pine Manor College to expand its mission, confer the Bachelor of Arts degree in humanities and social sciences

1979



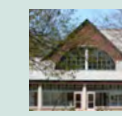
The first Bachelor degree recipient graduate

1983



Fitness Center opens

1986



Annenberg Library and Communications Center open

MAIAW Class B Women's Basketball State Championship

1991



Pine Manor College's chapter of the Alpha Chi National Honor Society is established

1994



Pine Manor College's charter is expanded to include the BA in Biology

1995



Rosemary Ashby Campus Center opens

FOUNDATIONAL LEARNING

A hallmark of the Pine Manor College educational experience has been the emphasis placed upon establishing a firm foundation of learning skills that support academic inquiry and success. Since the establishment of Pine Manor in 1911, students were required to develop their foundational writing and mathematical skills. First-year students typically took composition writing courses in their first year, which were often set up as a learning community with the instructor serving as the academic advisor for at least the first year.

Beginning in the mid-1990s, Pine Manor College created a portfolio learning system to help students foster and track additional learning outcomes. The first version of this program included a portfolio learning seminar co-taught by a faculty and staff member, who became the student's academic advisors and support system. Students completed a sophomore and senior portfolio to highlight their progress in achieving the College's learning outcomes and their educational growth. PMC was one of the first colleges to require students to reflect upon their college journey and competencies through a portfolio.

Through the years, the foundational program developed into one where in their first and second years students enrolled in a series of courses: First Year Seminar, First Year Experience, and Sophomore Colloquium. These courses integrated the skills necessary for academic success with a process for self-exploration that was individualized to each student, focusing on our distinctive "one student at a time" approach. The foundational series equipped students with the skills and competencies to be productive citizens in a multi-cultural world. Through a series of engaging group activities, including service learning and community service, students became accomplished, reflective, and confident college students. Service-learning and community service were built into this program from its beginning. It was also where first-year students were introduced to PMC's talented and committed faculty and staff who served as their mentors and role models. This was the foundation to the later creation of the Initiative for Student Success support structure that expanded to the full college journey, and continued the tradition of holistic and individualized support.

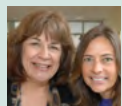
BUILDING COMMUNITY

The foundational program created a community of learners on campus. This was developed in recent years through a half-day retreat to the Hale Reservation that focused on team building and risk-taking. This experience was a highlight for both students and staff and set the tone for the semester. Students learning from other students has always been a key element of a PMC education. An important addition to the First Year Program was the incorporation of peer mentors in the first-year seminars. These student mentors served as Teaching Assistants who teamed with course instructors to develop and facilitate the First Year Seminar and academic advising program as well as activities for the entire campus community. These student leaders worked closely with the FYS team and student affairs staff and played an integral role in supporting student success and engagement. PMC has always been a supportive home for its students, with individuals across the community serving as temporary family.

1996



Dr. Gloria Nemerowicz becomes President



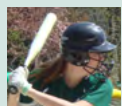
EDUCATING WITH PURPOSE

Beginning in 2016, the College revised its general education learning competencies and developed a new approval process of the senior portfolio and the introduction of the award for Exemplary Senior Portfolio, which included a monetary prize given to up to five seniors each academic year and funded by the generous donations of the PMC Board of Trustees. Quotes from these portfolios are shared with the PMC community each year to demonstrate the growth and pride felt by graduates. In academic year 2020, through a generous gift of a mission-aligned donor the Career Focused Paid Internship program was established. The program broadened PMC's experiential learning programming and had a direct impact on student's ability to access potential career opportunities. PMC continued to enhance its methodologies and programming to ensure student success, and continued to form a supportive and inclusive environment that has always been the College's hallmark.

2001



Softball GNAC Champion, NCAA Championship Appearance



2006



The Solstice Master in Fine Arts in Creative Writing Program begins



THE LEGACY OF PMC

Over the past few years, this vital work that defined Pine Manor College became recognized outside of the dedicated community. Through PMC's clarity of purpose and focused intent, the Initiative for Student Success received attention and acknowledgment from many organizations and mission-aligned individuals. That recognition, including ranking by the *US News and World Report* as a national leader in Social Mobility (ranked #11) and ranked #1 in Campus Diversity, provided fertile grounds for the agreement with Boston College.

Pine Manor College and Boston College came together through these mutual values of social justice and equity in education, culminating in an integration agreement in the Summer of 2020. The agreement initially provided a \$50 million endowment and since has expanded to \$100 million for the Pine Manor Institute for Student Success at Boston College. As part of the Institute's mission to support first-generation, low-income students, Boston College announced the launch of a summer college prep program beginning the summer of 2022. The inaugural cohort of 40 High School and Middle School students will enjoy free programs including SAT prep and mentoring. In addition, the Institute for Student Success at Boston College is structured to become the umbrella organization for all student success programs at BC. Separately, the launching of Messina College, a two-year program that is scheduled to launch in 2024, will become yet another vehicle for advancing student success and access to higher education. Messina College will reside on the historic Pine Manor College campus. At the core of those initiatives and the collaboration with Boston College is the focus on student success and the motivation to build upon the Pine Manor College legacy for years to come.

2008



PMC receives NSF Bioschoalrs grant to supporting women from underserved communities in the study of biological science



2014



Pine Manor College welcomes first coeducational class



2016



Thomas M. O'Reilly becomes President
2016 & 2017 ACAA Men's Soccer Champions



2018



2018 ACAA Men's Basketball Champions

2020



US News & World Report Ratings #11 in Social Mobility



THE COMPOUND EFFECT OF EDUCATING ONE STUDENT AT A TIME

The community of Pine Manor College will live on where it has always lived: in the hearts and minds of the students, alums, faculty, and staff; in the success stories brought about by individual empowerment; in the continued advocacy for the education of those underrepresented.

The beginning of something new means the end of something familiar. As the chapter of Pine Manor College as a degree-granting college is coming to an end, there is much to look forward to in the continued work by the Pine Manor Institute for Student Success. As we look back to the thoughtful investment that the staff and faculty of PMC has made in generations of students, it is easy to realize the tremendous impact Pine Manor College had on many

thousands of students, their families, and their communities. It is exciting to know that the good work will endure and persist through the Pine Manor Institute for Student Success. This important work, evident in the lives of our alums, will continue to empower, influence, and evolve in the spirit of the PMC mission and our history.

In honor of thousands of young students who made Pine Manor College their home over the years, we open a small window to their stories in the following pages. Starting from the 1960s and moving through the decades, concluding with the most recent graduating class, the class of 2021, we share sampling of their stories.



MARGO CUSHING '61

The Class of 1961 was a friendly group and many have remained friends over the years. Margo was in Advanced French and lived in the French House which she found to be a fun and meaningful experience. Spring vacation of Margo's senior year she went on a trip to Italy, and fell in love with the country. The next year she studied independently in Florence and learned Italian and many new things. Her Pine Manor College experiences informed and influenced her career as a travel agent and

is an Italy expert and recognized as such by Travel and Leisure magazine from 2003 to 2013. Wonderful professors like Dr. Rod Henry and Dr. Mary Gegerias encouraged her to travel, as Margo recalls, "I was lucky enough to be part of several Pine Manor College alumnae/i trips to Europe with these amazing professors and met many Pine Manor College alumnae - these experiences informed and influenced my career choices."

Margo served on the Alumnae Board of Directors for several years. As an alumna the College continued to influence Margo in different ways and she enjoys attending events in Chestnut Hill and in Manhattan.

"...these experiences informed and influenced my career choices."

BARBARA BALDWIN DOWD '69

Barbara feels she gained confidence in her academic abilities during her years at Pine Manor College. Her favorite teacher was Mrs. Atkinson, who encouraged her to speak up and express carefully argued opinions. She also loved Dr. Rod Henry's classes in art history, and later traveled twice with him to Italy to see the great art in Naples, Assisi, Rome and Venice. She also traveled to Aix en Provence, Nimes, Arles and Paris twice with Dr. Gegerias. The professor she knew the best was Dr. Beth Gardner; "Professor Gardner promoted careers in the sciences long

before other women's colleges, and she helped many graduates go into medical professions." Barbara got to know her even better while she was serving as a member of the Pine Manor College Board of Trustees. Barbara admired Dr. Gardner's clear vision of what PMC had been and could be, and how to nurture students from many different backgrounds. Barbara and her husband John have given back to Pine Manor College in many ways. Their generous financial support has touched the lives of many students. Barbara, a long-time trustee, served for

years on the planned giving committee, hosted and attended hundreds of events over the years, and encouraged her fellow trustees and classmates to join her in giving back not only financially but also in a volunteer capacity.

"[Prof. Gardner]... promoted careers in the sciences long before other women's colleges, and she helped many graduates go into medical professions."



MARY-LOU YOUMANS MOULTON '63

Mary-Lou arrived on the Wellesley campus in the Fall of 1961 after graduating from New Canaan High School in New Canaan, CT, driving through a full-blown hurricane hitting the area to get to Pine Manor College. She lived in Wheeler House, which was also a dining center and recalls being very happy that she didn't have to wake up extra early to walk to breakfast. She recalls their House Mother Miss Gurney had assigned Mary-Lou to the job of Fire Warden - she had to blow her whistle and awaken everyone in

the house at 2:00am and felt she was not popular those nights!

"My roommate, Lassie Stout, was from St. Paul, Minnesota. She was a very friendly girl and an excellent athlete. We roomed together both years and she was on the tennis team and I was in the modern dance group." Several of Mary-Lou's classmates were from Texas which back then was a great distance to travel. "My favorite professors were Dr. Rodman Henry and Dr. Mary Gegerias." Mary-Lou

said. "They demanded hard work but their high expectations brought out the best in us."

"My favorite professors were Dr. Rodman Henry and Dr. Mary Gegerias. They demanded hard work but their high expectations brought out the best in us."

DOROTHY (DORRY) DAVIS KEE '72

After three degrees and three careers, Dorry Kee is still working in three as a trustee, an alumna, and a recent PMC parent. Summing up her experience at Pine Manor College, the word 'opportunity' quickly comes to mind. Growing up in Dallas, Texas, Dorry embraced the new environment at Pine Manor College. She enjoyed challenging new opportunities, from interesting internships to invaluable connections within New England and beyond, the possibilities seemed endless. Dorry went on to pursue a pre-med path at Duke University followed by a Master's

in Healthcare Administration at Texas Woman's University. It is no surprise that experiencing the College as a parent, was most exciting for Dorry. After graduating with a Bachelor's degree in communications her son, Nate Kee '18, realized he really wanted to enter the sciences in pursuit of a career in healthcare. He was welcomed to PMC and worked to meet the requirements for a Bachelor's degree in biology. His senior year internship in the Trauma Services unit at Inova Loudoun Hospital in Virginia, turned into full-time employment. Dorry said, "It was wonderful being back on

campus, meeting my son's great teachers and, at graduation, presenting him with his degree." Dorry reflects, "It is my personal conviction that every individual can thrive with mentorship, personal engagement, and the opportunity to continue to grow and advance, and Pine Manor College gave that to every student from 1911 on."

"It is my personal conviction that every individual can thrive with mentorship..."

LISE CHIN LEIST '73

Raised by her mom and great grandmother in Rye, New York, Lise recalls that conversations of college were not on the table. College, however, was on her radar, but there were no financial resources or school mentorship programs that provided a concrete path to get there. Two weeks before high school graduation, Lise mentioned to her mother that everyone was going to college and that perhaps she should join the Navy. The very next day, her mother called the high school counselor who reached out to 'someone who knew someone' and introduced Lise

to Pine Manor College. The next thing she knew, she was on a train from New York to Boston on her own, finding her way to her new home. Lise was soon introduced to new people and new ideas. And through the many meaningful relationships that she built at Pine Manor College, this unfamiliar territory became a second home, and offered an opportunity for growth. As Lise described, "Everyone at Pine Manor College, from faculty to administration, all made me feel worthy. I never felt isolated. I felt so welcomed and embraced. It's that sense of belonging that

launched my career and empowered me to dream big and aim high."

Lise Chin Leist '73 served as Vice Chair of the Pine Manor College Board of Trustees, and in 2021 joined the Boston College Board of Trustees.

"It's that sense of belonging that launched my career and empowered me to dream big and aim high."



SARAH ACER ALLEN '79/'81

Sarah was a member of the first class to have the option to earn a Bachelor's degree at Pine Manor College. She was so happy her first two years, that she decided to stay at Pine Manor College for four years. "For me, Pine Manor College has been a part of my family legacy," Sarah said with a laugh, her sister Lucinda Acer Harris graduated in 1971, her father, Oscar Acer, was a long-time trustee, and Sarah and her husband Tim lived on campus with their young family

in the 1980s and 1990s when Sarah was a Village Coordinator for South, which allowed her to meet a generation of Pine Manor College students which she is still in contact with today. Sarah's three daughters Charlotte, Laura and Clara all attended the Child Study Center, and Tim followed her father's footsteps and served as a Pine Manor College trustee – he even wears Sarah's father's Pine Manor bow tie! Sarah was extremely fond of Dr. Mary Gegerias who inspired Sarah's love

of French and encouraged her to study in Paris. Sarah and Tim live in Chestnut Hill, staying close by and are often visiting campus, and both are always available to help the College.

"...Pine Manor College has been a part of my family legacy."

ANGELA JONES '76

When she arrived at Pine Manor College from Mississippi, Angela found her PMC professors to be supportive, caring, approachable, and attentive. "My professors put my interests first," she said, "The support I received from my peers reinforced that message."

Angela has many fond memories from PMC such as an economics course, a trip the professor led to New York City for the Model U.N., and an English class that concentrated on feminist studies where they repeatedly discussed women working outside the home for the first time - Angela could not identify because as an educator, her mother had always worked outside

the home, as did other female pillars in her life. Angela remembers the impact she had as her professors thoughtfully adjusted their discussions to include the African American experience and point of view.

Currently a special education teacher in the Wellesley Public Schools, Angela held leadership positions since her high school days - she was voted "the girl most likely to succeed" by her classmates - and they were right! Angela took her Pine Manor College foundation and earned a Bachelor's degree from American University, a Master of Divinity from Harvard Divinity School and is currently pursuing a Master's of Education in Special

Education for Moderate Disabilities. Angela's interests in politics led her to positions with the Jimmy Carter/Walter Mondale Presidential Re-election Committee, the Walter Mondale/Geraldine Ferraro Presidential Committee, Senate Majority Leader Chuck Schumer, and others.

"My professors put my interests first. The support I received from my peers reinforced that message."

PIER PENIC '88

"The English department was amazing and what was important for me was the core team in the department which played a significant role in preparing me for success. My Pine Manor College education, and my major in English provided me with the training and exposure that opened up doors to various fields." Pier was engaged in many activities as a student, she was the captain of the field hockey team, President of Ujima, a black student organization and she was a peer senior advisor.

Pier currently resides in Virginia. She has an extensive background in the Education Management Industry is an entrepreneur and a comparative artist. Currently, she is the Education Specialist and Project Curator at the Smithsonian National Museum of African Art. She also has had the pleasure of showcasing her comparative artwork in her most recent exhibit at the Smithsonian Anacostia Community Museum in Washington, D.C. entitled 'Gen Z Speaks: A Right to the City.'

"My Pine Manor College education [...] provided me with the training and exposure that opened up doors to various fields."

ELIZABETH (LIZ) CARY BLUM '92

As Director of Alumnae/i Relations and a 1992 graduate of Pine Manor College, Liz Cary Blum has invested much time, energy and talent supporting Pine Manor College's alums. After graduation, Liz served on the Annual Fund Executive Committee, the Young Alumnae Council and then the Alumnae Board of Directors, where she served as Vice President for two years and President for a year. She also served on the Board of Trustees for nine years, and in 2013, Liz was hired by the College to re-engage alums. A Communications major and a Psychology minor, Liz believes the leadership and writing skills she acquired at Pine Manor

College were the foundation for her successful career in fundraising and journalism. All in all, since '92, there has hardly been a consecutive 30 days when Liz has not been on campus – either as a volunteer, a trustee, a Child Study Center parent, or an employee. “I have enjoyed supporting Pine Manor College alums since my graduation - it has been an absolute pleasure.”

Originally attracted to PMC by its size, the personal relationships students had with their professors, and its beautiful campus, Liz hears many of the same thoughts echoed by current students and young

alums. “It is interesting to hear the some thoughts from different generations of PMC alums,” she says, “they all express a deep appreciation for many of the qualities that first appealed to me and many other graduates of Pine Manor College.”

“It’s been my passion to advocate for Pine Manor College alums since my graduation, and it has been an absolute pleasure.”



GLORIA HARRISON-HALL '93

When Gloria graduated from Wayland High School she was voted “the most likely to be famous,” however she realized she wasn’t prepared academically to go to college. A guidance counselor suggested that Gloria look at Pine Manor College, believing a small, supportive college community would be perfect for her. Gloria had visited the Pine Manor College campus through the METCO Program before and was open to the idea. “The minute I met with Pine Manor College Admissions I knew I had found my place.” she recalls. Once she arrived she had amazing resources supporting her and she hit the ground running. She was determined to take advantage of every

opportunity she was offered. Anything she wanted to try – basketball, singing, theatre, student government, the Pine Manor Post – she was welcomed with open arms by staff, faculty and peers.

Gloria was a leader in UJIMA at Pine Manor College and was way ahead of her time attempting to break down cultural barriers and encourage students to learn and to teach each other about different cultures. That experience had a profound impact on her life, and today she co-runs with her elementary school friend, a hugely popular podcast called Hard Candy and Fruit Snacks. The two talk about their backgrounds, both cultural

and socioeconomic and how it affected their childhoods and who they are today as adults. They have also embarked on a mission to raise scholarship funds - the Pay it Forward Social Justice Scholarship raised \$60,000 in three months and have been able to award scholarships to high school seniors attending Wayland and Boston Public Schools. Gloria also wrote a musical, “Letters from the Ghetto,” based loosely on her own experiences.

“The minute I met with Pine Manor College Admissions I knew I had found my place.”

SUSAN (SUE) GIBSON '95

Sue is a take-action kind of alum. In 2017 when she heard that the Town of Brookline was considering taking part of Pine Manor College’s campus through eminent domain to build a new elementary school she immediately created an online petition against the proposed plan. Within days there were several thousand signatures, and a small army of alums ready to fight for their college.

Sue, originally from Houston, Texas and now living in Palm Beach, Florida, is a loyal alumna who stays connected to

Pine Manor College by arranging mini reunions with her PMC friends, attending and hosting events for alums, and by consistently supporting the Pine Manor College Annual Fund. In her free time, she is a long-time member of the Junior League of Palm Beach, and is active with the local American Heart Association, the Contemporaries at the Society of the Four Arts, American Friends of British Art, and the Peggy Adams Animal Rescue League. She keeps in touch with many Pine Manor College friends, “I am so grateful for

the foundation the Pine Manor College experience gave me.” she said, “And over the years, staying connected to my Pine Manor College friends continued to be an enriching experience.”

“I am so grateful for the foundation the Pine Manor College experience gave me.”

MARGARET (PEGGIE) SWEENEY KRIPPENDORF '96

Peggie Sweeney Krippendorf will go down in history as the highest-scoring women’s basketball player in Pine Manor College history. During college, her successes on and off the court are equal parts open opportunities and community support. As she pursued a degree in Business and Management, she was never shy about leaning on her fellow Gators, win or lose, and the PMC faculty, who gave her the freedom to explore her options and find a rewarding career path. “I loved that each professor knew you by name and assisted you in figuring out what you enjoyed and wished to pursue,” Peggie said. Having such deep personal relationships with her

professors and peers and knowing they were all in her corner gave Peggie the confidence to explore her myriad career options. After her Pine Manor College internship program connected Peggie with the Massachusetts Alcoholic Beverages Control Commission, she discovered a hidden passion for social justice and legal administration. It wasn’t long before Peggie went from the basketball court to Law School and to the Norfolk County Superior Court, where she now works as the First Assistant District Attorney under District Attorney Michael W. Morrissey.

“Through Pine Manor College I developed the confidence I needed to explore and find what I was truly interested in.”

SERA GODFREY-KAPLAN '02

In 2000, Sera Godfrey, an undergraduate Psychology major and point guard for the Gators, understood something about leadership that many never do. So she did what every good leader does: shared her findings. When it came time to assemble her sophomore portfolio, Sera famously linked teamwork on the basketball court with her study of Psychology and social work. In both places, teamwork, thoughtfulness, strong lines of communication, and encouragement led to better individual outcomes for all involved. But by then, Sera already saw this philosophy played out across her community at Pine Manor College—in

the teachers and faculty who cared for her and challenged her, and in her relationships with her peers, who shared their diverse experiences and raised each other up. Sera summed it up nicely: “You get a big city education within a warm, small-town environment.” Now a clinical director of a mental and behavioral health services nonprofit and a board member for the International Association of Social Workers with Groups, Sera applies her same formula for leadership to her team of clinicians and clinical interns, as well as the people and families in therapy. “The emphasis on leadership and the creation of a portfolio were powerful for

me.” she recalls. Sera is also an adjunct instructor in the social work programs at both Wheelock College of Education and Human Resources at Boston University, where she can further share her knowledge, experiences, and guidance.

“*The emphasis on leadership and the creation of a portfolio were powerful for me.*”



TEAKIA BROWN '07

When Teakia Brown enrolled in Pine Manor College's Sociology and Political Science program, she knew that her future waited for her at the intersection of social justice and women's health, but she was unsure of how to proceed. So she looked to her professors for guidance, but what she found in her academic relationships was the freedom to make that decision for herself, to use her heart and her passions as her map and compass. Her professors would be there for her no matter what. “They believed in me,” Teakia said, “even when I came in with some crazy idea for

a research project. They supported me in exploring ideas and just thinking about where I could take my life.” After an enlightening and successful undergraduate internship with Planned Parenthood of Massachusetts, Teakia was asked to stay aboard as a grassroots organizer. She and her team built community support and petitioned her local government for more equitable sexual and reproductive care and education. From there, Teakia focused her professional life on administering to those who struggle with alcohol or substance abuse and survivors of sexual

assault investing her talent in numerous local organizations in support of people with profound challenges, trauma and needs. These were natural next steps for someone who was developing skills in educating and advocating for the underserved in her community.

“*Pine Manor College gave me the gift of possibilities.*”

BISHNU MAYA PARIYAR '04

Nepal outlawed caste-based discrimination in 1963, but the Dalit of rural Nepal—once called the untouchables—still experience oppression at the hands of their government and the higher castes, including a lack of public accommodation, little access to education, forced labor, and more. Since Bishnu Pariyar, the daughter of a Dalit tailor, was ten years old, she promised herself, her family, and her community to stand against this institutional, social, and cultural marginalization.

And by 1998, less than a decade later, that dream was a reality. Bishnu and a

group of like-minded women formed the Association for Dalit Women Advancement of Nepal (ADWAN), a not-for-profit organization founded on building intercaste solidarity and developing channels for economic relief and education for Dalit women and girls. When Bishnu arrived at Pine Manor College, ADWAN was in its early days, but her professors took notice and were in awe of her determination and leadership. Bishnu's principles and values of economic justice and equity in education aligned closely with those that Pine Manor College had championed for nearly a

century. “Bishnu Pariyar is living proof that individuals can make the world a better place,” said William Voegelé, Ph.D.

“*I dream big and I work for under privileged women and children in Nepal and United States. Change is possible and we all can become an Agent of change.*”

STEPHANIE CRAWFORD '09

As a K-2 classroom teacher for learning disabled children in the Boston Public School system, Stephanie has to leverage her knowledge of varied curricula, social and developmental sciences, classroom management, and what she calls “the politics of education.” What a parent or a student might understand as teaching is actually the confluence of a dozen or more disciplines, balanced and applied in a way only a passionate teacher understands.

And underpinning it all is a desire to shape hearts and minds, as well as a motivation to challenge and strengthen the institutions that made it all possible.

While an undergrad at Pine Manor College, where she majored in Early Childhood Education, Health, and Leadership, Stephanie received two kinds of real-world experience—first, through her senior internship, the hands-on practice of teaching students; second, through conversation with her mentors

and peers, the invaluable opportunity to listen to and learn from those whose backgrounds differed from Stephanie's.

“*My liberal arts experiences at the college have enabled me to think about ideas from multiple perspectives.*”

DOROSELLA “DORA” KALUMA GREEN ‘11

From her first visit to Pine Manor College Dora felt as though the College could provide her an extraordinary opportunity to explore her interests. Her journey at PMC proved her right, “I knew Pine Manor College would help me explore my interests in the liberal arts, and find my voice as a leader,” she said.

Dora welcomed the idea of incorporating liberal arts into her science focus. In Dora’s time at Pine Manor College, she

was able to step outside the traditional Bachelor’s degree course load by interning with the NARAL Pro-Choice America Foundation and the Tufts School of Medicine, where she would later enroll for her Master’s degree. Both reinforced the importance of research and political advocacy in health care. As a graduate Dora believes the Pine Manor College community does not end when students graduate; the faculty and staff keep in touch with their former students and work

continuously with alums to help them shape their career paths and lives.

“I knew Pine Manor College would help me explore my interests in the liberal arts, and find my voice as a leader.”

TATIANA MENDEZ ‘15

Tatiana, a former Biology major, excelled in her classes at Pine Manor College, and when it came time to select her senior internship, she chose the Clark Research Lab at the Tufts University School of Dental Medicine, where she worked as a lab technician. At the time of her graduation she felt that she had landed her dream job. On her graduation day, she exaltedly said, “...this is the job I never thought I’d have.”

While still a researcher at Tufts University School of Dental Medicine, Tatiana is working on a career change and is

currently applying to Dental School. She credits Pine Manor College for her drive and sense of empowerment to dream big. It was at PMC that Tatiana learned not only the field of biology but the practical life skills of a working professional—interviewing, resume building, and thinking critically and passionately about one’s future.

“PMC got me to where I am today.” she said, “Without the amazing guidance of my advisors (many of them I am still in touch with) and the small class setting, I don’t know if I would have been able to

finish college. I also had the chance to participate in many networking events which is what led to my position at Tufts.”

“Without the amazing guidance of my advisors (many of them I am still in touch with) and the small class setting, I don’t know if I would have been able to finish college.”



ELIZABETH (AZU) ADJEI ‘13

No senior internship arranged through Pine Manor College is ordinary, but some are a special kind of extraordinary. Nearly ten years ago, former Biology major Liz Azu Adjei sat with her mentors and chose Brigham and Women’s Hospital. Doing what? Assisting in autopsies as a pathology assistant, cleaning and weighing human organs. Unconventional though it may be, what better way for Liz to study bodily functions and the interconnectedness of organ systems? Her undergraduate education, which included liberal arts classes, coupled with her internship—literally a hands-on experience like no other—opened up an opportunity for Liz

to become a medical technologist for Quest Diagnostics. Her calculated career choice also provided her a stepping stone into graduate school. While Liz was busy sequencing DNA and helping health care professionals diagnose and treat diseases, she was also logging patient hours, which allowed her to apply to her graduate programs of choice.

Liz completed her nursing degree from Northeastern University and is now a practicing Registered Nurse. She still credits the individual attention she received at Pine Manor College, “PMC’s Liberal Arts foundation helped broaden

my horizon.” She also credits the flexibility PMC offered her to blend biology and liberal arts classes into her course load, “I feel being a biology major in a liberal arts college contributed to my foundation allowing me to continue and explore career opportunities.”

“PMC’s Liberal Arts foundation helped broaden my horizon.”

JOSE PAOLINO ‘16

Jose is a Licensed Chemical Dependency Counselor and works at the Behavioral Health Group in Pawtucket, working at Bournwood Hospital as a mental health counselor. Jose was the first PMC male graduate, and he gives credit to Pine Manor College for much of what he has achieved.

“PMC allowed me to grow, and gave me perspective, as well as the understanding that although we are all striving to live better lives, we all come from different cultures and beliefs, and we must

understand this in order to better ourselves and better our community. PMC also taught me to give everyone a chance. People don’t chase their dreams because of the stigmas that society places on them, but fortunately, I have been able to see other people of color reach their dreams locally, and they are role models for me.

Finally, PMC taught me how to deal with many obstacles, adversities and build patience which all prepared me for the role of a father. My daughter was born a week after I graduated, and I also have a

son who is 8 months old. The greatest gift for me was that although I was away from home, I felt like I was home at PMC.”

“...although I was away from home, I felt like I was home at PMC.”



2020 President's Cup Awardee
FEVEN BEDARD-KHALID '20

"Deciding to move far away from home to come to Chestnut Hill has helped me become the strong black woman I am today. I found leadership opportunities, advisors, and administrators that encouraged me to get involved and student leaders who reminded me of the value of my voice. Mostly, I was allowed to be myself, and along the way, I was able to find my purpose. Each opportunity helped me uncover what I want to do and the power I have to shape my own life."

I will be forever grateful for my time at Pine Manor College and for all the wonderful people who believed in me."

2021 President's Cup Awardee
DEANGELO CLARKE '21

"Graduating from Pine Manor College was the biggest accomplishment of my life. I always knew I wanted to go to college, but I never thought it would be such a wonderful experience. Being a part of a diverse community made me more aware of the world and helped me grow into the man I am today. On March 21st, 2021, I lost my dad, and I was struggling to overcome my grief. Coming back to campus allowed me to clear my mind and re-focus on my work. Receiving the President's Cup award at my graduation showed me that all my hard work, both in the classroom and within myself – did not go unnoticed. It gives me the strength to continue to dream big and set ambitious goals for myself."



*** The President's Cup is awarded to a graduate who has furthered our understanding of leadership and social responsibility through personal and community accomplishments.*

The final commencement ceremony of Pine Manor College will take place on Sunday, May 15th 2022. A live-stream of the event will be available on the website at: www.pmc.edu/commencement-2022



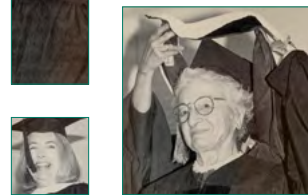
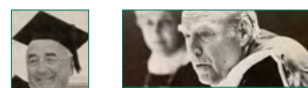
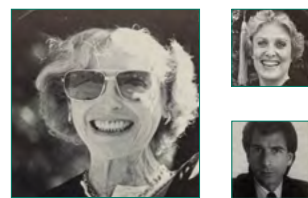


Michael S. Dukakis, 2018

Renée Watson, 2018

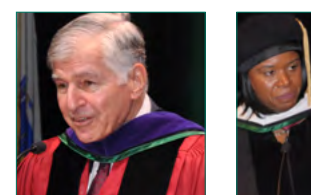
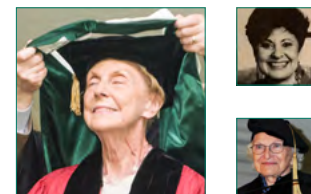
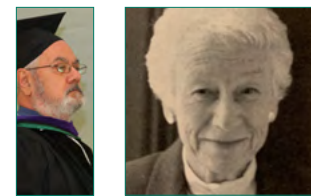
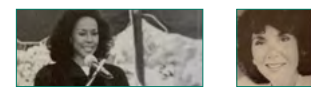
Honorary Degree Recipients

Since 1981 Pine Manor College has awarded honorary degrees to individuals who have made significant contributions to society, their fields of study or in service to the College. These individuals are ambassadors of the college, believe in the PMC mission and the need to create opportunities for those who otherwise would not have them. Our distinguished honorary degree recipients, included alums, artists, leaders in their fields, educators, and public officials, who are also role models for our students.



- 1981 Dorothy McGuire Swope '36**
Actress
Frederick Carlos Ferry, Jr.
President Emeritus, Pine Manor College
- 1982 Leonore Annenberg**
Former Chief of Protocol, U.S. Department of State
Pauline Tompkins '38
Educator, Writer, President Emerita, Cedar Crest College
- 1983 Sherry Lansing**
Independent Producer and Partner, Jaffe-Lansing Productions
Emily Wetherby Sullivan '24
Designer, Emily Wetherby Associates
- 1984 Barbara Carroll Block**
Jazz Pianist
Katherine Fanning
Editor, Christian Science Monitor
- 1985 Josephine Abercrombie '44**
Chairman, J.A. Abercrombie & Sons
John Marion
Honorary Chairman, Sotheby's North America

- 1986 Sharon Percy Rockefeller**
President, WETA FM
Judy Woodruff
Former Chief Correspondent, MacNeil/Lehrer News Hour
- 1987 Leonard Bernstein**
Composer, Conductor
Helen Grace Coates
Former PMC Faculty, Concert Pianist, Arts Administrator
James Browning Wyeth
Artist
Kitty Carlisle Hart
Actress, Singer, Arts Administrator
- 1988 Diahann Carroll**
Actress, Singer
Nancy Dickerson
Writer, TV Reporter
Marvin Minsky
Mathematician, Physicist, Engineer
George Plimpton
Author/Editor, Paris Review

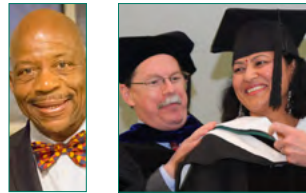


- 1989 The Honorable Walter H. Annenberg**
Philanthropist and former Ambassador to Great Britain
Edgar Bronfman, Jr.
President, Seagram Company
Martina S. Horner
Former President, Radcliffe College
Donald Saunders
Real Estate Developer
Liv Ullman
Actress
- 1990 Alice Tepper Marlin**
President, Council on Economic Priorities
Harold W. McGraw, Jr.
Chairman Emeritus, McGraw-Hill, Inc.
- 1991 Wallis Annenberg '59**
Counselor, Daniel Freeman Hospital Editorial Staff, TV Guide
Mother Clara Hale
Founder, Hale House, New York City
Seamus Heaney
Poet, Nobel Prize Winner
John A. Rassias
Faculty, Dartmouth College Founder, Rassias Language Institute
- 1992 Richard E. Deutsch**
Trustee Emeritus, Pine Manor College Philanthropist
William Randolph Hearst, Jr.
(posthumous) Chairman, Hearst Enterprises
- 1993 Susan McGee Bailey**
Director, Wellesley College Center for Research on Women
Euterpe Boukis Dukakis
Retired Educator
Sherri Poe
CEO and Founder, Ryka, Inc.
- 1994 Michel Butor**
Author
Susan Hampshire
Actress
Robert Conover Macauley
President, AmeriCares Foundation
Liz Walker
Anchor, WBZ-TV4
- 1995 Rodman R. Henry**
Professor Emeritus, Art History Pine Manor College
Margaret Lazarus
Documentary Film Maker
Mary Richardson
Co-Anchor, Channel 5's Chronicle
- 1996 Teresa Heinz**
Philanthropist and Chair The Heinz Family Foundation
Barbara Gray Koch '50
Trustee Emerita, Pine Manor College
Patricia Smith
Poet, Boston Globe Columnist
Lydia Woodward '71
Executive Producer/Writer, ER

- 1997 Judy George**
Chair and CEO, Domain Home Fashions
Lydia Villa-Komaroff, Ph.D.
Vice President for Research and Professor of Neurology, Northwestern University
Edith Blakeslee Phelps
Author, Spokesperson, and Consultant on the Education and Development of Girls and Young Women
- 1998 Star Jones, Esq.**
Co-Host, ABC TV's The View Susan J. Blumenthal, M.D. Assistant Surgeon General of the United States
Frances Crandall Dyke '25
(posthumous) PMC Alumna and Benefactor
- 1999 The Honorable Jane Swift**
Lieutenant Governor of Massachusetts
Kip Tiernan
Founder, Rosie's Place Co-Founder, Poor People's United Fund
Linda Whitlock
President, Boys & Girls Clubs of Boston
- 2000 Catherine Bertini**
Executive Director, World Food Programme
Deborah Prothrow-Stith
Associate Director for Faculty Development and Director of the Division of Public Health Practice Harvard School of Public Health
Nina Totenberg
Legal Affairs Correspondent, National Public Radio
Karen Smyers
World Champion Triathlete
- 2001 Vicki Donlan '71**
Founder and Publisher, Women's Business Pine Manor College
Sandra Labas Fenwick
Chief Operating Officer, Children's Hospital, Boston
Martella Wilson-Taylor
President and CEO, YWCA-Boston
- 2002 Libby C. Candler '77**
Co-Chair, Board of Trustees, Pine Manor College
Susan D. Lindquist, Ph.D.
Director, Whitehead Institute for Biomedical Research
Marita Rivera
Vice President and Radio General Manager, WGBH
- 2003 Anne B. Batterson '59**
Author, Adventurer, Teacher
Marsha Johnson Evans
President and CEO, American Red Cross
Antonia Coella Novello, M.D.
New York State Health Commissioner



2004 Priscilla Dewey Houghton '44
Arts Educator and Author
Barbara Lee
Principal, The Barbara Lee Family Foundation
Gloria White-Hammond, M.D.
Co-Pastor, Bethel AME Methodist Church



2005 Callie Crossley
Television and Documentary Producer
Maconda Brown O'Connor '50, Ph.D.
Education Scholar
Patara Raiva Sila-On '61
Chair, S&P Syndicate Public Company Limited
Lillian Vernon
Founding Chairman, Lillian Vernon Corporation



2006 Leslie Allen
Founder and Executive Director, Leslie Allen Foundation
Johnetta B. Cole, Ph.D.
President, Bennett College for Women
Emily Kernan Rafferty '69
President, Metropolitan Museum of Art, NYC



2007 Anne Noland Edwards '70, P'00
Co-Chair, Board of Trustees, Pine Manor College
Philip O. Geier, Ph.D.
Co-Chair, Board of Trustees, Pine Manor College
Executive Director, Davis United World College Scholars Program
Yvonne Gomez-Carrion, M.D.
Assistant Professor, Harvard Medical School
Associate in Obstetrics and Gynecology, Beth Israel Deaconess Medical Center
Swanee Hunt, Ph.D.
Director, Women and Public Policy Program, John F. Kennedy School of Government, Harvard University
Victoria Rowell
Actress, Author and Dancer
Founder, Rowell Foster Children's Positive Plan

2008 JudyAnn Rollins Bigby, M.D.
Secretary of Health and Human Services, Commonwealth of Massachusetts
Constance Hess Williams '64
Senator, 17th District Commonwealth of Pennsylvania
Jacqueline Woodson
Award-Winning Author

2009 Lori Arviso Alvard, M.D.
Associate Dean of Student and Multicultural Affairs, Dartmouth Medical School
Diane B. Patrick
Attorney and First Lady of the Commonwealth of Massachusetts
Deborah E. Wiley '66
Senior Vice President, Corporate Communications, John Wiley & Sons, Inc.

2010 Trish Carter
CEO and Co-Founder, Dancing Deer Baking Company
Corneila Kubler Kavanagh '60
Sculptor
Gloria Reuben
Actress, Singer, Social Activist



2011 Lydia R. Diamond
Playwright and Producer
Gloria Nemerowicz, Ph.D.
President, Pine Manor College
Candice Wolfswinkel '97
Chief of Staff, TOMS Shoe Company



2012 Jill Ker Conway
Author, Visiting Scholar and Professor at MIT, President of Smith College, 1975-1985



Linda Dorena Forry
State Representative for the 12th Suffolk District of Massachusetts, 2005-Present



Laurie Samuels Pascal
Vice President, Business Development and Planning, Beth Israel Deaconess Medical Center
Trustee of Pine Manor College, 2002-2012

2013 Bishnu Maya Pariyar '04, M.A.
Founder & President, Empower Dalit Women of Nepal (EDWON)
2004 graduate of Pine Manor College



2014 Barnett "Barney" Frank, M.A.
Member of the U.S. House of Representatives from Massachusetts 1981-2013

Elizabeth Van Orsdel Moulds '64
Trustee of Pine Manor College, 2006-2014

2015 Serena Strazzulla Kokjer Greening '59
Board of Trustees, Pine Manor College

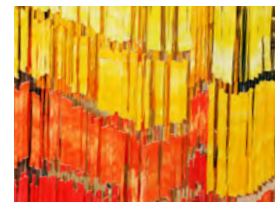


2016 Linda "Lenny" Kooluris Dobbs '68
Painter, Illustrator and Photographer
Brenda Bernstein Shapiro '58
Member of the Pine Manor College Board of Trustees



2017 Tommy Chang, Ed.D.
Superintendent of the Boston Public Schools
Katrina Shaw, M.S.W.
Chief Executive Officer, Freedom House, Inc.

2018 Michael S. Dukakis
Former Massachusetts Governor and presidential nominee



Renée Watson
Author, activist, and educator
Melissa James
Founder, President and CEO of The Tech Connection

William Gross
Commissioner of the Boston Police Department

2020 Keith Motley, Ph.D.
Professor, Chancellor Emeritus, UMass Boston



Thomas M. O'Reilly, M.B.A.
President, Pine Manor College

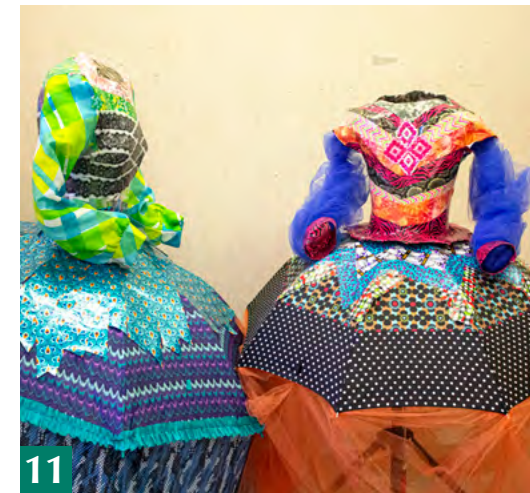
50 YEARS OF ART AT THE HESS



In 2021, The Hess Gallery celebrated its 50th year as a distinguished showcase for contemporary New England artists and as an exhibition space for students' work.

Inspired by art faculty members, the gallery originally was situated in the old single-carriage house on campus. Through the generosity of Class of 1964 alum Constance Hess Williams and her father, Leon, it moved in 1971 to its present home on the first floor of the Annenberg Library building. Over the years, many faculty members have directed the gallery, most notably Professor of Visual Arts Carole Rabe (now retired) and the current Director, Carolyn Wirth.

The gallery enriches the lives of the entire Pine Manor College community and is an art resource for neighboring communities in greater Boston. Widely reviewed in the Boston Globe and Artscope magazine, among other regional publications, the gallery has three to four invitational exhibitions each year. True to its dual mission "to showcase contemporary New England artists and exhibit the work of Pine Manor College students and alums," the Hess provides a stage for both professional and student artists from the PMC community and New England.





17



18



19



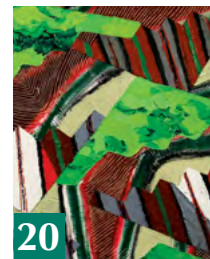
GIVING WITH PURPOSE

Professional artists who have exhibited at the Hess include: Maria Magdalena Campos-Pons, Fern Cunningham, L'Merchie Frazier, Lavaughan Jenkins, Marky Kauffmann, Marjorie Kaye, Niho Kozuru, Stephanie and Chuck Stigliano, Nora Valdez and Freedom Baird.

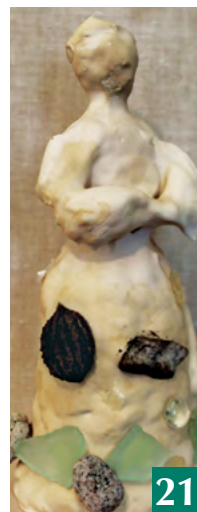
Professional area arts organizations like the National Association of Women Artists (Massachusetts Chapter) and the New England Sculptors Association exhibited in the gallery proper and outdoors on the library lawn. The Hess Gallery has hosted work by many Pine Manor College alums including Mass. Cultural Council fellowship awardee Marky Kauffmann, '72, and fashion photographer Itaysha Jordan, '01. The gallery also displays Visual Arts Majors' Senior Projects as well as other student work.

- 1 1998 – Ingrid Capozzoli,** *The Figure Observed, Works on Paper.*
- 2 1998 – Iso Papo,** *Paintings and Drawings*
- 3 2000 – Carole Rabe,** *Paintings*
- 4 2001 – Arno Minkinen,** *Photographs*
- 5 2002 – Susan Butler,** *Photographs*
- 6 2002 – Lou Jones,** *Every Color has a Different Song*
- 7 2012 – Sandra Golbert,** *Fiber Art*
- 8 2002 – Itaysha Jordan '01,** *Fashion Photography*
- 9 2012 – Chawky Frenn,** *We the People—Radical Rights By, With, For the People*
- 10 2012 – Group exhibit of Boston-area artists,** *curated by Ronni Komarow, Pages for the Planet: Artist's Books and Ecology*
- 11 2014 – Karen Meninno & Monica Mitchell,** *Play on Fashion, mixed media*
- 12 2014 – Devon Govoni '05,** *A Wide Range of Emotions*
- 13 2015 – Janet Kawada,** *felted structures from "The PLACE Between"*
- 14 2016 – Yetti Frenkel,** *Bronze fountain, from "The Nature Show" a curated group show of members of the New England Sculptors Association (NESAs)*

- 15 2016 – Illustrator Priscilla Alpaugh,** *from an exhibit of four children's book illustrations*
- 16 2015 – Merrill Comeau,** *Fiber art, from "The PLACE Between"*
- 17 2016 – L'Merchie Frazier,** *quilt, from "Resist," protest art exhibit*
- 18 2017 – C.A. Stigliano and S.M. Stigliano,** *A Work in Art and Life*
- 19 2018 – "Faculty & Friends" participating artists,** *Alfred De Angelo, Sketchbook Triptych Oil on canvas on wood*
- 20 2018 – "Faculty & Friends" participating artists,** *Laurel McMechan, Forever war*
- 21 2018 – "Faculty & Friends" participating artists,** *Carolyn Wirth*
- 22 2018 – "Faculty & Friends" participating artists,** *Elizabeth Archer, Standing Woman bronze*
- 23 2018 – Do I Make You Happy?** *Adria Arch's art installation and the Luminarium Dance Company, performance that combines dance and sculpture.*
- 24 2020 – Moved to Act! Demonstrations, Marches, Political Actions,** *Curators Marky Kauffmann (Pine Manor '72) and Ellen Feldman selected a wide variety of images from many different protest movements.*
- 25 2021 – Tamar Orell Petler,** *A Journey Through the COVID-19 Pandemic*



20



21



22



23



24



25

For the past 112 years every donation given to Pine Manor College, big or small, has made a difference in the lives of our students. This support has helped us with monumental projects such as moving from the Dana Hall school in Wellesley to our own home in Chestnut Hill, build and renovate buildings such as the Ashby Campus Center, Haldan Hall and Ellsworth Hall, and provided millions of dollars in scholarship support to students who had a dream. We are grateful to all of our donors through the years. We are highlighting a few of our alums who have and continue to be among some of our longest supporters. Join us in thanking them for their loyalty to our College.



BARBARA (BABS) GRAY KOCH '50

When Babs Gray Koch, '50 was recently asked about her decision to support Pine Manor College

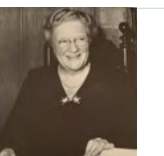
with a legacy gift, she replied, "I put a lot of credit to the small, wonderful, cozy environment and cultural life that was there." However, at first, she recalls, "I didn't want to go." Her father suggested a visit to campus, a two-year school at the time, and after much deliberation, her father managed to convince her to make the journey. She soon realized that Pine Manor "was fabulous for me. It gave me a very good bounce to my life, and a good foundation."

As with her initial hesitation about her own enrollment, each transition for the school has also given Babs pause. The change from a two-year to a four-year school, from a women's college to co-educational made her ponder, "how are they going to change?" I wanted to "make sure it is for the better," she says. It took time, she continues, to "get over my

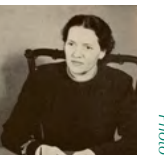
own hurdles but I am happy to support an important mission."

With the announcement of the partnership with Boston College, Babs wrote: "I am certainly delighted that Pine Manor College and Boston College have worked together so creatively and have advanced a new [path] of expanding so many educational opportunities for underserved students. I am so happy that the legacy of Pine Manor College, will have a chance to live on through this new "Pine Manor Institute for Student Success", along with "Messina College". The integration of Boston College with Pine Manor College has been a great step for both colleges. I'm grateful to know that many of my personal hopes, dreams and goals have been more than fulfilled.....that all students might have a special education in a supportive environment. This could lead to real goodness and justice for everyone."

"I know what Pine Manor College brought to my life," Babs states, "and I want it to do the same for others. That's why I want to ensure my support continues well into the future."



Katharine Richmond, Dean of Permissions



Mary Virginia Harris, Academic Dean



Cathrene Peebles Gilbertson, Social Dean



Candlelighting Service, Led by Joanne Pennington

Photos: Pine Log 1951



Studio



Marion A. Gleason, Dispensary Director



Cameron Thompson, English



Madeleine Crawford, Biological sciences



Marguerite Brodeur Lee, Theatre



John Philip Agnew, Acting Dean



Beverly Gertrude Alexander, English



Jean Gertrude Brown, Physical Education

Photos: Pine Log 1959

Photos: Pine Log 1964

WALLIS ANNENBERG '59

When Pine Manor College moved from Wellesley to the Chestnut Hill campus in the mid 1960s, there wasn't an adequate library, and there were no facilities for communications majors. In honor of his daughter's time at Pine Manor College, Ambassador Walter Annenberg, who founded popular publications such as TV Guide, was the lead donor in a capital campaign to build a state of the art communications center and library. Ms. Annenberg (her friends and classmates call her Wally to this day) has been involved not only as a loyal donor, but also as a

trustee and now a trustee emerita. The Annenberg family's generosity has been part of Pine Manor College's history for seven decades, and we are grateful. The Annenberg Library and Communications Center has served every Pine Manor student since it opened in 1986.



BARBARA BIDDULPH PRESTON '58

If you meet Barbara and David Preston, it is hard to tell who the Pine Manor College alum and who is the spouse of an alum. David loves the College as much as his wife Barbara does and they have been generously supporting the College for years. Barbara has enthusiastically been part of planning her class reunions and was a long time trustee, now trustee emerita. Barbara and David have hosted many

wonderful events for Pine Manor College over the years, and the two are extremely involved and philanthropic in their local community.



CONNIE HESS WILLIAMS '64

When the news was announced in June that President Biden nominated Connie Hess Williams '64 as a member of the National Council for the Arts, the Pine Manor College's community was thrilled yet not surprised. In responding to the news, President O'Reilly wrote: "Connie has remained an ongoing benefactor of Pine Manor College through unrestricted gifts that provide financial aid to our students and support our programs. We are very proud of all her accomplishments, and we are grateful for her thoughtful generosity toward Pine Manor College."

A long-time advocate for education and the arts, Williams' family funded the Hess Gallery as part of significant philanthropic investments in these fields, as President Biden's nomination stated, "Williams is

widely known throughout her community for her strong record of involvement with a special focus on education, the arts, and economic development across broadly diverse regional organizations. She served as the Chair of the Board of The Philadelphia Museum of Art and is now Chair Emerita. She was also a trustee of the National Museum of American Jewish History, Steppingstone Scholars Inc., Barnard College, The Episcopal Academy, The Baldwin School, Pine Manor College and The Kimmel Center of Performing Arts in Philadelphia."



ELIZABETH (BETSY) VAN ORSDEL MOULDS '64



When Elizabeth "Betsy" Van Orsdel Moulds '64 attended a luncheon a few years ago at the home of a fellow alumna, she never expected that she was about to create what would become Pine Manor College's largest alumnae club in the country! The spirit and enthusiasm typical of Pine Manor College graduates inspired Betsy to develop a network of women from numerous generations in the Northern California area. Together they created the Northern California Alumnae Club. As members began hosting events and offering ideas, the club began to grow.

Using her many talents Betsy's impact on the Pine Manor College Northern California Alumnae Club is unmistakable. As the largest centralized association of alums in the country, the club hosts multiple activities

throughout the year. Betsy describes how each member is a part of the legacy of Pine Manor College, and as a member of the Board of Trustees for eight years, from 2006 to 2014 and member of the college's Advancement Committee, Betsy attests: "You could always tell that the faculty and staff really cared about the students." This statement is echoed every day by generations of Pine Manor College alums all over the country and the world.



ANN PAPPJOHN VASSILIOU '93



Ann Pappajohn Vassiliou '93 and her parents Mary and John Pappajohn P'93 are among Pine Manor College's most loyal supporters. Ann Pappajohn Vassiliou '93 received her degree in Early Childhood Education, and in honor of her accomplishments, her parents Mary and John Pappajohn gave generously to renovate the Child Study Center, now the Ann Pappajohn Vassiliou '93 Child Study Center. The Pappajohns are passionate about education and saw the value this highly regarded preschool brings both to the surrounding community, to faculty and staff whose children attend, to the PMC students who worked in the school, and to the students who gain valuable experience attending the school. Mr.

Pappajohn was born in Greece and moved to the United States, settling in Iowa as a very young child. He learned English when he moved here, worked in his father's store growing up and graduated from the University of Iowa. The lessons from growing up in a new country and working in his father's store set the stage for Mr. Pappajohn's eventual business and philanthropic career. Whenever Pine Manor College has needed advice or assistance, the entire Pappajohn family has always been there for us.



Mary Gegerias, French



Rodman Robinson Henry, Art History



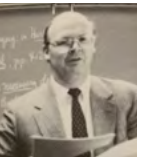
Thomas Michael O'Donnell, Mathematics



Harriet Howe Greene, Natural Sciences



Mahala Beams, Dance, Music



Gary Harris, Political Science



Kathleen Aguro, English



Sid Abdullgh, Management, Eco

Photos: Pine Log 1964

Photos: Pine Log 1993

Photos: Pine Log 2000



Judith A. Davidson, German



Elizabeth Ballantine Gardner, Biology



William Stargard, Art History, Athletics



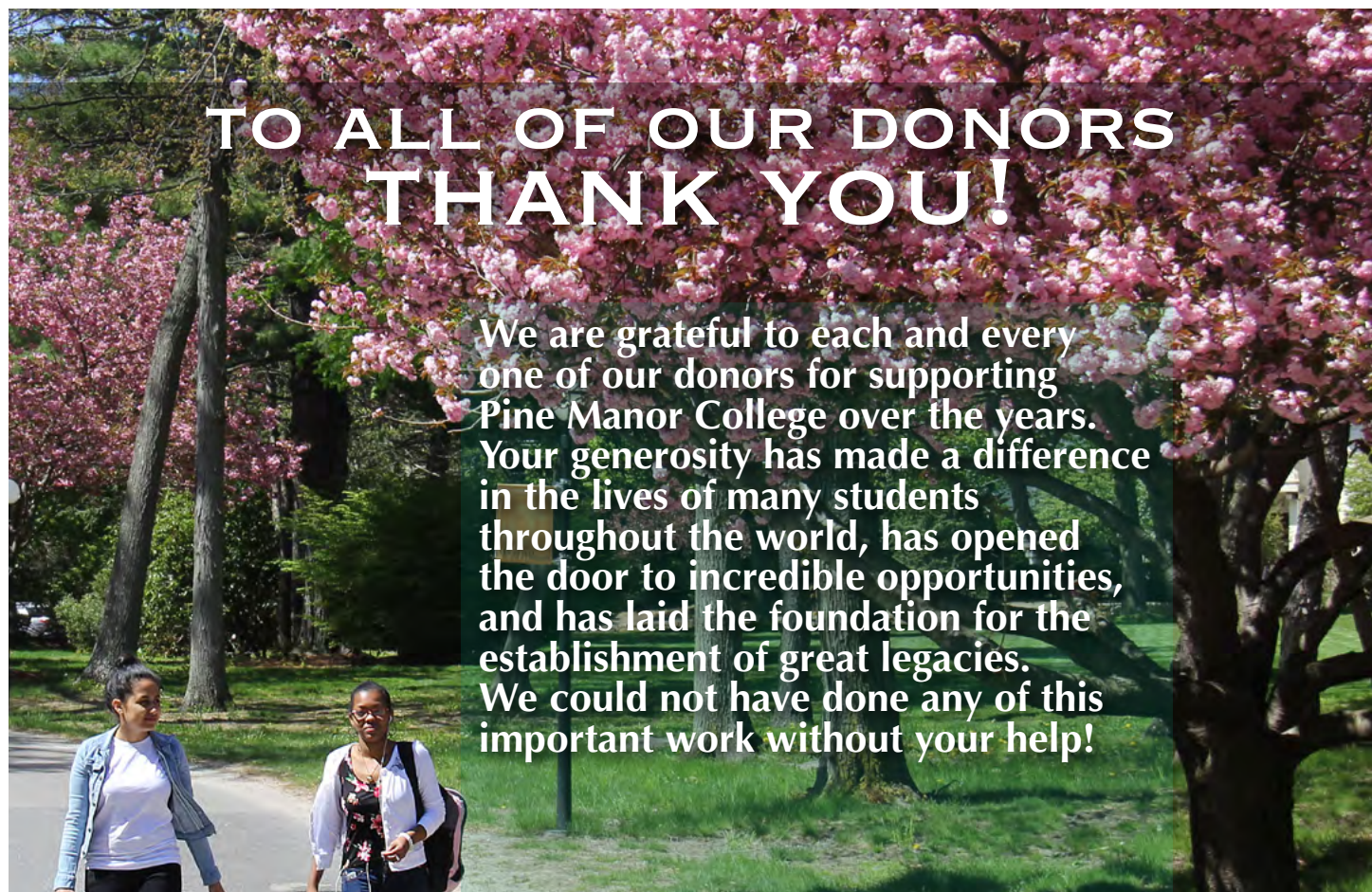
Nancy White, Psychology

ANNE NOLAND EDWARDS '70, P'00

Anne Noland Edwards loved her experience at Pine Manor College, so much so that her daughter Christine attended and graduated in 2000 and spent time after graduation working as a teacher at the Child Study Center. Anne – an honorary degree recipient who was the chairwoman of the College's Women of

Promise Capital Campaign, as well as Co-Chair of the Pine Manor College Board of Trustees – and her family have been extremely generous to Pine Manor College. Their kindness has ensured that hundreds of students have been given the same opportunities. Anne learned a great deal about art during her time at Pine Manor College and is passionate about the arts, serving on several boards including the Virginia Museum of Fine Arts, the Pratt Institute in Brooklyn, New York, and the Delaware College of Art and Design in Wilmington.

For more photos from the Pine Manor College digital commonwealth collection:
www.digitalcommonwealth.org/collections/



TO ALL OF OUR DONORS THANK YOU!

We are grateful to each and every one of our donors for supporting Pine Manor College over the years. Your generosity has made a difference in the lives of many students throughout the world, has opened the door to incredible opportunities, and has laid the foundation for the establishment of great legacies. We could not have done any of this important work without your help!

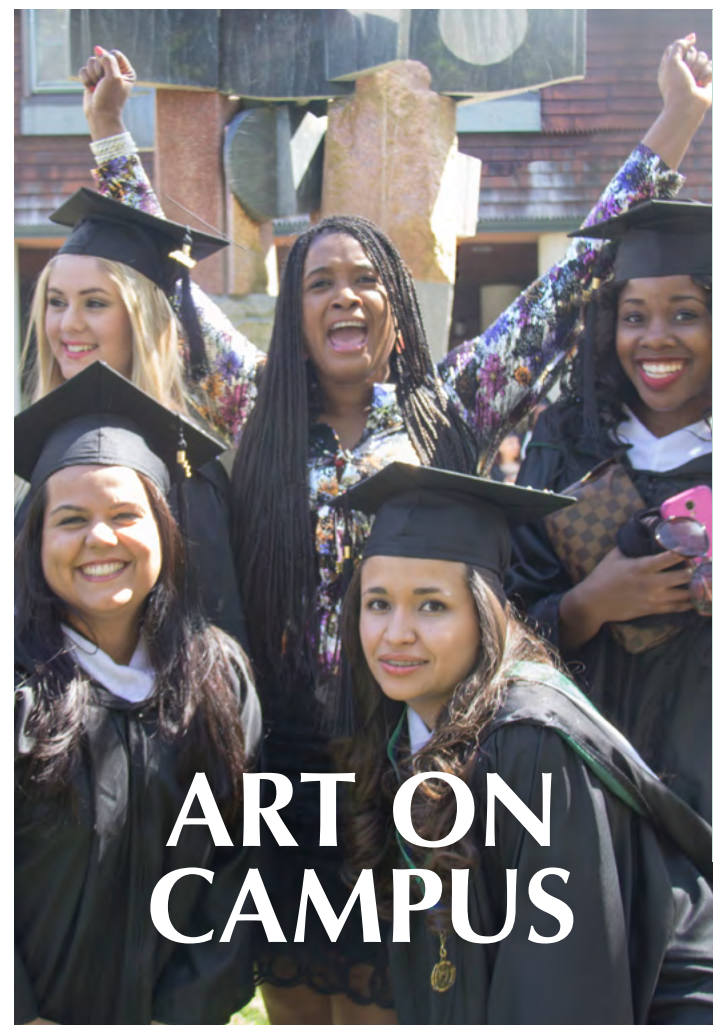


Aevum II
by Cornelia Kubler Kavanagh '60

Donated by the artist in 2010

Life Force I
by David Bakalar

Gift to honor Gloria Nemerowicz's inauguration as President of PMC in 1997



ART ON CAMPUS



Primavera
by Dimitri Hadzi

Donated 1986 for PMC 75th anniversary by Carolyn Caswell '52, Ruth Barstow Dixon '33



Cow Weather Vane

Atop the barn

Leading Edge
by John Safer

Donated in 2009 by Raymond & Anne Bridge Baddour '97





Elegant
by *Beverly Benson Seamans*
Donated in 2009 by Raymond & Anne Bridge Baddour '97



Bellfast
by *Robert Cronin*
Commissioned by the Boston Foundation and Boston Arts Commission and funded by National Endowment of the Arts in 1972

Reef
by *Sandra Golbert*
Donated by the artist in 2012



Andre Eugene Beaudoin
American French Tool Press
Donated by Eleanor Rubin in 2017



Carved Dragon Heads bracing the portico at Ferry Administration Building. **Designed in 1891 by architects Jacques and Rantoul** to allude to Scandinavian mythology and to honor the Dane Family



Community Mural
Ashby Campus Center
by *Percy Fortini-Wright, 2019*



Running Free
by *Katherine Tod Johnston '41*
Presented to honor her 50th Reunion in 1991

Remembered



RUTHANN BERGMAN

Professor Emerita of Business

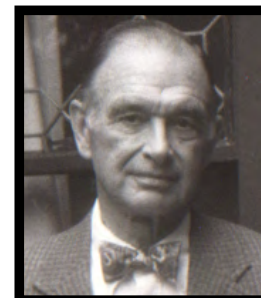
Faculty Emerita Ruthann Bergman retired from her position as Associate Professor of Business in 2014. For over 20 years of educating and mentoring, she exemplified faculty dedication to students' careers and future. Bergman prided herself on her record of successfully finding her students employment immediately after their graduation, especially for those students who had an interest in Accounting. An active community member, Ruthann helped redesign the Business program multiple times.



FREDRICK (FRED) CONVERSE CABOT

Professor Emeritus of English and American Literature

Fred Cabot had so many roles at Pine Manor College that it is hard to count them all. As a Professor of English he inspired many students over the years - he is always fondly recalled by his former students and kept in touch with many. Fred was a longtime College trustee and was chair of the nominating committee. He spoke with great wisdom and compassion. He mentored many faculty, students and trustees over the years, and attended every alumnae/i event he could. He was always happy to have lunch with students and faculty friends and loved running on the College's wooded cross country trails. After he stopped driving, former students and his faculty friends would drive him to events, everyone grateful for the chance to spend quality time with Fred. In addition to serving as a trustee of Pine Manor College, he served at the Longy School of Music and the Boston Landmarks Orchestra. Additionally, he was an oarsman and crew coach, weather watcher, lover of Vermont woods and mountains and the Maine seacoast, and friend to everyone.



BURNHAM CARTER, JR.

Professor Emeritus of English

Over his 25 years at Pine Manor College, Dr. Carter was the Academic Dean as well as a Professor of English. He was the first Josephine Abercrombie '44 Chair in English. Dr. Carter, known for his adorable bowties was beloved by his students, many recalling he and Dr. Fred Cabot reading love poems on Valentine's Day in the Founder's Room. He was the quintessential New England college English professor, and his love of teaching enriched the lives and learning experiences of hundreds of students over the years.





NIA LANE CHESTER

Professor Emerita of Psychology

Dr. Chester spent more than 30 years in Higher Education, developing innovative approaches to curriculum. During her time at Pine Manor College Dr. Chester served as Vice President of Academic Affairs and Dean of the College, as well as a beloved Professor of Psychology. Dr. Chester also authored numerous papers and books, including her work on the impact of divorce on families and the experience of women in the workforce. An endlessly compassionate spirit, Dr. Chester's trademark positivity and selflessness left an unmistakable impression on her students, family, friends, and acquaintances alike. Helping others was her natural inclination – always a teacher, nurturer, and advocate in her personal as well as professional life. Many of her former students say that Dr. Chester was the reason they pursued psychology as a career field.



ELIZABETH (BETH) BALLANTINE GARDNER

Professor Emerita of Biology

For more than 50 years, Beth was an active member of the Pine Manor College community, dedicated to the success of the students and the College. She joined Pine Manor College in 1967 as both a faculty member and Chair of the Department of Natural Science. As Chair of the Division of Science, she, in collaboration with Dr. Nancy White developed the Biology major, which remains today. One of her most enduring contributions to the education of the students was her work on the reconfiguration and renovation of the Dane Science Building to support the science curriculum. She created and taught a variety of courses such as Psychopharmacology, Human Genetics, Nutrition, and Biology of Women. She challenged her students, made science accessible, and was dedicated to the success of every student. She secured funding for the "Bioscholars Initiative" from the National Science Foundation to provide financial support to students of promise. Following her retirement, Beth remained as an integral member of the College through her work with the Development Office and the Physical Facilities Committee. Her dedication to PMC was recognized when she received the Distinguished Service Award in 2016. She was a mentor and friend to many faculty and staff. Beth was respected as a serious colleague, committed to excellence, always looking for ways to improve herself, her peers, her students and the College. A large spruce tree, brought to Chestnut Hill from her property in Idaho, continues to thrive outside the Ferry Administration Building to remind us of Beth and how she helped the sciences at Pine Manor College grow.

Professor Gardner's Tree



MARY GEGERIAS

Professor Emerita of French

Even if you were not a French student, you knew Mary G. and she cared about you as a student. She was beloved by her students, spending time in the French House, taking groups of students on amazing trips to Europe and creating the Year In France international program. She was devoted to the College for 50 years, having taught on the Wellesley campus as well. She was often found having lunch or dinner in the refectory with her students, and the conversations were always in French. When she died, she left a collection of French books to the College so she could continue educating future students in the language that she loved. She remains one of the most remembered teachers at Pine Manor College reunions and events.



RODMAN (ROD) ROBINSON HENRY

Professor Emeritus of Art History

Even if you never took an art history class, you knew Professor Henry. He was a beloved and influential professor at Pine Manor College for over 40 years and taught on both the Wellesley and Chestnut Hill campuses, chairing the committee that oversaw that move. There was no one more well-versed on the architecture of the Dane Estate, as documented in several monographs that Dr. Henry authored. He would often give architectural tours of the campus to students, alums and friends. Dr. Henry was extremely personable, and enjoyed keeping in touch with his students over the years. He instilled a great appreciation for art and architecture in the hundreds of students he taught. He was the first Clara Torrey Clement Chair in Art History, and received many honors over his academic career.



BOB OWCZAREK

Professor Emeritus of Theatre and Communication

Robert "Bob" Owczarek, retired Professor of Theatre and Communication, was a beloved professor, mentor, colleague, and friend to many for 30 years who cared deeply about his students. Those of us who knew him will always remember Bob's "theatrical" presence in the classroom, meetings, when directing our plays, and during trips to London. Bob had a profound effect on many of our alums and was committed to helping all students succeed and realize their potential. Bob embodied the mission of the College to educate and empower students "one student at a time" and helped many of our alums attain their career goals.

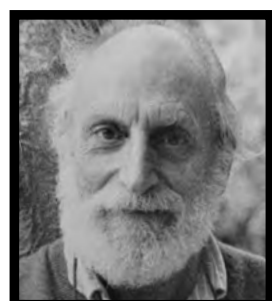


PAM PALMER

Director of Enhanced Foundational Program

The Pine Manor College community lost a beloved teacher, friend and colleague when Pam Palmer died on December 1, 2011. Pam joined Pine Manor College in 2004 as Academic Coordinator for the English Language Institute and was Director of the Enhanced Foundational

Program. Her love for the College and her passion for teaching were well known to all. At a campus gathering in her memory several of her students recalled how Pam's caring about them was powerfully contagious, empowering them to believe in themselves and their capacity to succeed. Again and again, students for whom English is not their first language eloquently explained how Pam's belief in their ability to master the skills of English made it possible for them to express themselves, tell their stories, and pursue their dreams.



ISO PAPO

Professor Emeritus of Visual Arts

Iso Papo was a quiet man, but when he spoke it was with tremendous wisdom and depth. He was born in Sarajevo, Yugoslavia in 1925, and in 1941, he and his family fled from Nazi occupation to Italy. He then escaped to Switzerland where he was safe until the end of the war. After the war he returned to Italy, where he studied at the Brera Academy of Art in Milan, graduating in 1951 after winning first prize for painting in the yearly national scholastic competition. Iso arrived in the United States in 1951 and taught art over the course of forty years at the Boston University School of Fine Arts and Pine Manor College where he was Chair of the Visual Arts Program. Always optimistic, engaged, and full of purpose, he truly lived a life of constant learning. His warmth and charm drew people in, always sharing words of wisdom with a great sense of humor. He led a figure drawing session every Saturday morning in the PMC upstairs drawing studio for decades and he welcomed all, regardless of ability. Iso was warm and sincere. He listened and had tremendous empathy. He was curious about the world and was equally comfortable in the science and art realms. His tremendous wisdom and depth are remembered in Iso's paintings that are part of Pine Manor College's history.



MICHELE TALBOT

Professor Emerita of Biology

Michele Mastrolia Talbot's greatest passion was teaching: she was a professor for 41 years at Pine Manor College, where she designed and directed the B.A. Program in Biology and Pre-Medical Studies. She developed new courses in areas including the biology of HIV and AIDS, ethical issues in science and technology, human infectious disease, epidemiology, pathophysiology, marine biology, and forensic science. Michele

was made an Honorary Member of the Alpha Chi Honor Society, and she received the Ruth Allinger Gibson Award for Teaching Excellence in 1988 and 2001, as well as the Kellogg Award for Distinguished Service. She also helped develop and direct the Articulation Program within the Connell School of Nursing at Boston College. She totally supported her students, and kept in touch after they graduated, and was the inspiration for many to pursue careers in the sciences. There is a beautiful bench given in Michele's memory outside the Dane Science Building where students and her colleagues often sit for quiet inspiration.



STEPHEN THOMPSON

Professor Emeritus of Philosophy and Religion

Stephen Thompson was a beloved teacher and mentor, productive scholar, and supportive colleague. He was also a dear friend to all who had the good fortune to know him. He never missed attending a local alumni event. He taught at Pine Manor College for over 40 years

and touched the lives of generations of Pine Manor College students. Stephen taught a wide variety of philosophy, religion, and interdisciplinary courses throughout his career, including Time, Change, and Death: The Meanings of Mortality; Personal and Professional Ethics; and Culture, Consumption and Identity. In addition to teaching, Stephen was active in the administration of the College, serving as Chair of the Arts and Humanities Division; Dean of First Year Students; Dean for Advising and General Education, and Dean for Co-Curriculum and Advising. Stephen encompassed a special talent for inviting collaboration and advocating for inclusiveness that he effortlessly modeled for others. He championed team-teaching and interdisciplinary research, teaching and learning. His dedication to Pine Manor College and to his students extended well beyond his teaching, and he became a life-long friend and mentor to so many.



ROSARIO (BOB) TOSIELLO

Professor Emeritus of American Studies

Even if you didn't have Dr. Tosiello as a teacher, you knew him and he knew you, because he cared about all students at Pine Manor College in his 29 year career with PMC. He was the College Marshall, a job he took great pride in, and was a welcome sight at official College ceremonies. He had several roles in his time at Pine Manor College including Professor of History, Chair of the Social Sciences Division, and Dear of Academic Policies and Procedures. He was extremely passionate about his research on Max Ascoli, a mid-20th century Italian-American educator and anti-fascist and gave numerous presentations on the experience of Italians and other immigrants in America. He was honored by the National Endowment for the Humanities and was awarded a fellowship from Harvard University, as well as a Wean Professorship from Pine Manor College in 2001.



White Pine – *Pinus Strobus*

- 1 1916 2 1918 8 1921
- 12 1923 13 1924 32 1943
- 58 1969

Black Oak – *Quercus Velutina*

- 17 1928 18 1929 19 1930
- 20 1931 21 1932 22 1933
- 23 1934 24 1935

Red Pine – *Pinus Resinosa*

- 25 1936 26 1937 27 1938
- 31 1942

Flowering Dogwood (White) – *Cornus Florida*

- 37 1948 46 1957 48 1959
- 49 1960 50 1961 59 1970

Canadian Hemlock – *Tsuga Canadensis*

- 30 1941 33 1944 43 1954

Flowering Crab – *Malus*

- 35 1946 44 1955 47 1958
- 56 1967 60 1971

American Holly – *Ilex Americana*

- 42 1953 45 1956

Saucer Magnolia – *Magnolia Soulangiana*

- 28 1939

White Fir – *Abies Concolor*

- 29 1940

White Spruce – *Picea Glauca*

- 38 1949

Mugho Pine – *Pinus*

- 39 1950

Flowering Cherry – *Prunus*

- 40 1951

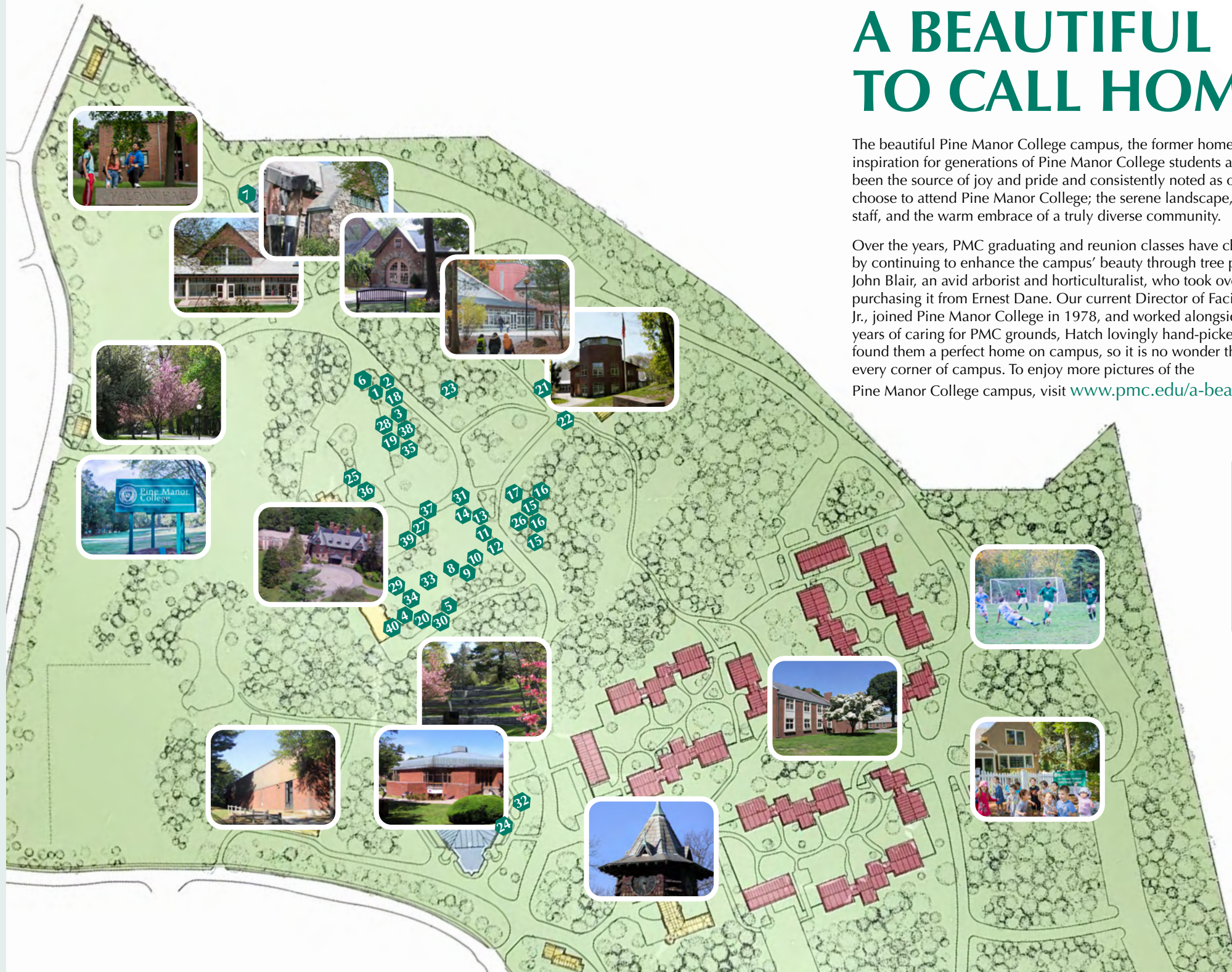
Upright Japanese Yew – *Taxus Cuspidata Capidata*

- 41 1952

A BEAUTIFUL PLACE TO CALL HOME

The beautiful Pine Manor College campus, the former home of the Dane family estate, has been an inspiration for generations of Pine Manor College students and alums. The gorgeous grounds have been the source of joy and pride and consistently noted as one of three top reasons for students to choose to attend Pine Manor College; the serene landscape, the exceptionally caring faculty and staff, and the warm embrace of a truly diverse community.

Over the years, PMC graduating and reunion classes have chosen to give back to the community by continuing to enhance the campus' beauty through tree planting. Many alums will remember John Blair, an avid arborist and horticulturalist, who took over maintaining the campus after purchasing it from Ernest Dane. Our current Director of Facilities and Maintenance, John Hatch, Jr., joined Pine Manor College in 1978, and worked alongside John Blair for many years. In his 43 years of caring for PMC grounds, Hatch lovingly hand-picked many of the plants and trees, and found them a perfect home on campus, so it is no wonder that John's signature can be found in every corner of campus. To enjoy more pictures of the Pine Manor College campus, visit www.pmc.edu/a-beautiful-place



The mighty Blue Atlas Cedar tree, presented to the class of 2020



In 2014, after a particularly harsh winter, John Hatch and the entire Grounds and Maintenance team were recognized for their dedication to the PMC community. During the light-hearted ceremony, Hatch was crowned PMC's Superman.



Tree planting at the Centennial Celebration Weekend 2012



Office of the President
617-731-7101
President@pmc.edu

Advancement
617-731-7113
Development@pmc.edu

Magazine Staff
Efrat Zinnar-Shavit
Director of Media and Publications
ezinnarshavit@pmc.edu

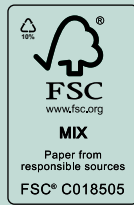
Tamar Petler
Graphic Designer & Staff Photographer
tpetler@pmc.edu

George Anderson
Media and Publications Intern
George.Anderson@pmc.edu

Contributing Writers & Proofreaders
Liz Cary Blum '92
Hannah Baker-Siroty
Ben Cushing
Kathleen Fowkes
Michael Manahan
Diane Mello-Goldner, Ph.D.
Michele Ramirez, Ph.D.
Barbara Schwartz
William Stargard, Ph.D.
Staci Weber, Ph.D.
Carolyn Wirth
Sarah Woolf

Contributing Photographers
Freedom Baird
Ian Dickerman
Cyrus Segawa Konstantinacos
Boaz Michaeli

An electronic copy of this Bulletin with links to additional photographs and related information is available on our web site:
www.pmc.edu/bulletin



Printed on recycled paper.

Published by
Pine Manor College
400 Heath Street
Chestnut Hill, MA 02467, USA.

Pine Manor College is an Equal Opportunity Employer committed to being the place where a diverse mix of talented people come together to do their best work. As a welcoming community, the College embraces Title IX of the Education Amendments of 1972, and other relevant legislation, and does not discriminate on the basis of race, color, national or ethnic origin, sexual orientation, age, sex, or marital status.



The Boston-area collective, FeministFuturist, brings thought-provoking new work to the Hess Gallery on March 1, 2022. The collective, formed in March 2020 at the Boston Center for the Arts, brings together digital installation, painting, sculpture, and participatory projects. Freedom Baird's Journey Quilt, incorporating materials contributed by Pine Manor College students, staff, faculty and alums from many eras, is constructed in the Stone Soup makerspace. AK Liesenfeld's digital portrait of Helen Temple Cooke highlights the Pine Manor College founder. New painting by Nancy Hayes, Linda Price-Sneddon and Marjorie Kaye brings kaleidoscopic and colorful visions of feminine empowerment. Christina Balch's mesmerizing new video and Liz Helfer's mashup of the handmade and the digital ask questions about the role of technology in American society. Karen Meninno and Carolyn Wirth, original FeministFuturist curators, bring their signature sculptures and installation work.



Participating artists: Freedom Baird, Christina Balch, Nancy Hayes, Liz Helfer, Marjorie Kaye, AK Liesenfeld, Karen Meninno, Linda Price-Sneddon, and Carolyn Wirth.

For more information about the exhibit's opening, artists' talk, and ways to contribute to the collaborative installation, please visit www.feministfuturist.com



JOIN US FOR A FINAL ALL-COLLEGE REUNION Friday-Sunday, May 13-15, 2022

Schedule includes a cocktail party, class dinners on and off campus, classes and workshops, and a memorial service to honor classmates and faculty and staff who we have lost. Alums are also invited to join the 2022 Commencement on Sunday morning.

We are looking for representatives (can be a group) from each class to serve on a Reunion Planning Committee. You will coordinate a group dinner off campus for your classmates (and other activities if you wish) and help encourage attendance to the reunion.

Please email me at ecaryblum@pmc.edu to volunteer or if you have any questions.

For more information and Hotel Group Rates, please visit: www.pmc.edu/coming-home-reunion2022

Warmest regards,

Liz Cary Blum

Liz Cary Blum '92
Director of Alums Relations, Pine Manor College
Office: 617-731-7006 | email: ecaryblum@pmc.edu

Alums Relations Post-PMC

On May 31, 2022 Pine Manor College will officially close its doors and hand over the baton to Boston College. We are working closely with the BC Alumni Relations office to ensure a smooth and thorough transition.

We will share more detailed information about this process as we get closer to the cut-over date. To ensure that you stay informed with all current information, please take a moment to update your contact information online.

To share with us your contact information, including phone number, email address and mailing address, please visit www.pmc.edu/mission-in-motion

